

**CAUTION**

THIS DRAWING IS THE PROPERTY OF IMC CO.,LTD., AND AS SUCH CLAIMS TREATMENT AS A CONFIDENTIAL DOCUMENT. REPRODUCTION, COPYING, TRACING, UTILIZATION FOR PURPOSES OTHER THAN AGREED, DISCLOSURE TO A THIRD PARTY, ARE STRICTLY SUBJECT TO PRIOR WRITTEN AGREEMENT BY IMC.

# **CMAXS**

## **Spare Parts Inventory Control Operation Manual (Headquarters System)**



## INDEX

	Page
1. System Outline	
1.1 Main Function	4
1.2 Basic Operational Flow (Routine Work)	6
1.3 Basic Operational Flow (Occasional Work)	6
1.4 System requirement	7
1.5 About the version up of program	7
2. System Installation Procedure	
2.1 Installation for "GO-Global"	7
3. System Start / Stop	
3.1 Connect to Application Server	11
3.2 Start / Stop System	13
4. Screen Description	
4.1 [Menu] Screen	14
4.2 [Parts Order] Screen	15
4.3 [Order List] Dialog	15
4.4 [Delivered Parts List] Screen	16
4.5 [Delivered List] Dialog	16
4.6 [Parts List] Screen	17
4.7 [Parts Detail] Dialog	17
4.8 [History (Consumed Parts)] Screen	18
4.9 [History (Ordered Parts)] Screen	18
4.10 [History (Delivered Parts)] Screen	19
4.11 [Annual Report] Screen	19
4.12 [Master List (Equipment)] Screen	20
4.13 [Master List (Store)] Screen	20
4.14 [Master List (Suppliers)] Screen	21
5. Check Critical Spare Parts with Shortage condition	21
6. Review Requisition and Assess	22
7. Make Quotation Sheet	25
8. Make Order Sheet	27
9. Review Delivered Parts	29
10. Review Consumed / Ordered / Delivered Parts History	32
11. Review Annual Report	35
12. Review & update spare parts	37
13. Review Master data (Equipment)	40
14. Review Master data (Store)	41
15. Review & Update Master data (Supplier)	42
16. Setting Authority & Password	44
17. Setting control	45
18. Common Utility Functions	
18.1 Search Code Function	46
18.2 Filter Function	46
18.3 Spare Parts Type Review & Modify	47
19. Appendix A. Sample Screen	48



## 1. System Outline

This system facilitates spare parts control for onboard machinery. There are major functions for spare parts inventory control and procurement of required spare parts etc. It consists of Headquarters System and Shipboard System installed on the ships managed under this system. Moreover, the users are restricted for each function as below.

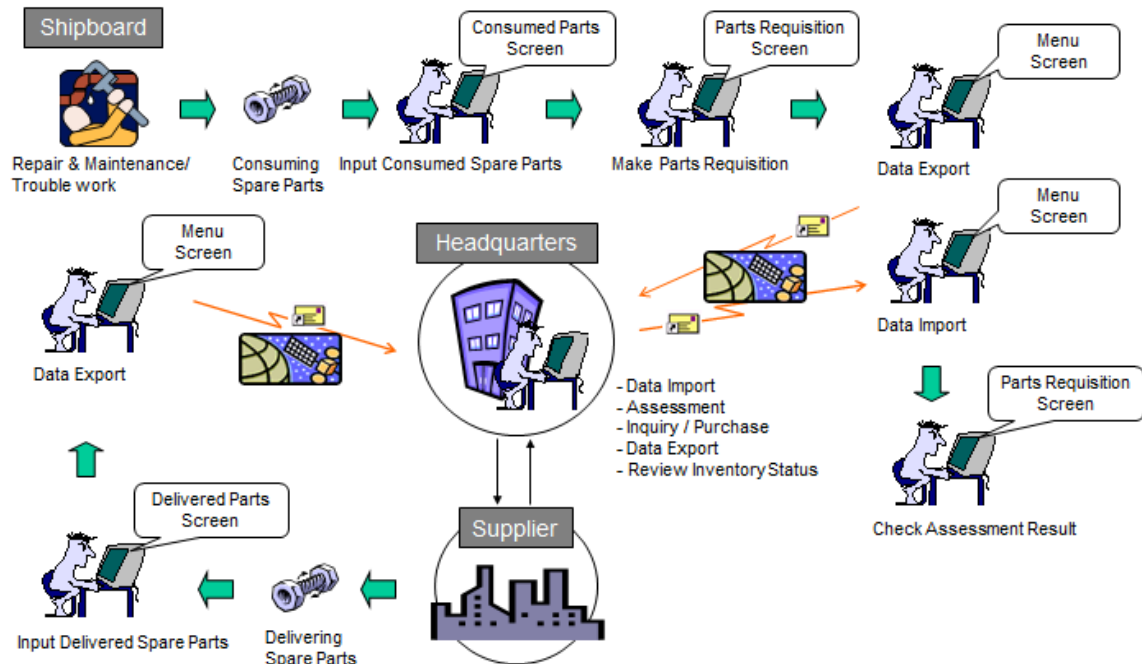
### 1.1 Main Function

User : A:Administrator B:Approval C:Input D:Review

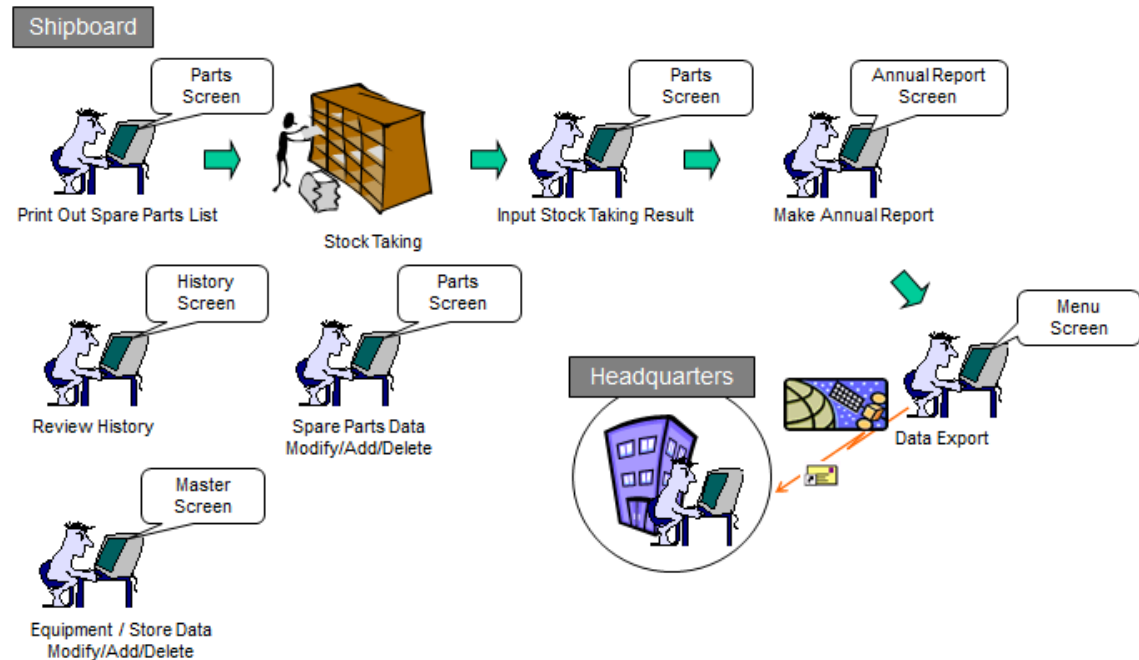
Item	Function	Shipboard	Headquarters	
Consumed Parts	Review	D	—	—
	Select & Input	C	—	
	Complete	C	—	
Parts Requisition	Review	D	D	Section 6
	Select & Input	C	—	
	Complete	B	—	
Order Assessment	Review	D	D	Section 8
	Input	—	C	
Order Sheet	Review	—	D	Section 8
	Generate	—	C	
Delivered Parts	Review	D	D	Section 9
	Select & Input	C	—	
	Complete	B	—	
History	Review	D	D	Section 10

Item	Function	Shipboard	Headquarters	
Annual Report	Review	D	D	Section 11
	Input	C	—	
	Complete	B	—	
Master Data (Spare Parts)	Review	D	D	Section 12
	Modify/Add/Delete	C	—	
	Modify (Spare Qty & SMS)	—	B	
Master Data (Equipment)	Review	D	D	Section 13
	Modify/Add/Delete	C	—	
Master Data (Store)	Review	D	D	Section 14
	Modify/Add/Delete	C	—	
Master Data (Supplier)	Review	—	D	Section 15
	Modify/Add/Delete	—	C	
Data Export / Import	Execution	C	C	Section 7,8,9,11
User Authority and Password	Modify	A	A	Section 16
Controls	Modify	B	B	Section 17
Data Backup / Restore	Execute	C	—	

## 1.2 Basic Operational Flow (Routine Work)



## 1.3 Basic Operational Flow (Occasional Work)



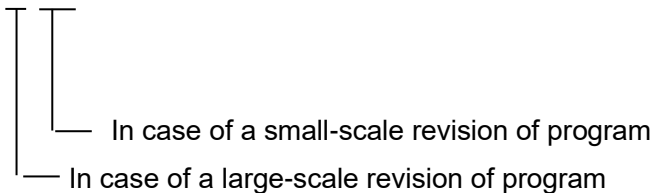
## 1.4 System requirement

The system requirement is as follows.

PC	IBM PC/AT compatible with Intel Pentium III processor (or equivalent) and later
OS	WindowsXP/VISTA/7
RAM	256MB (512MB recommended)
Free hard-disk space	50MB (Depend on Package software number and kinds)
Monitor	XGA (1024 x 768) or higher-resolution monitor with 256 colors

## 1.5 About the version up of program

Ver.1.x.x



## 2. System Installation Procedure

### 2.1 Installation for “GO-Global”

(1) Double-Click “gg-client.windows.exe”.

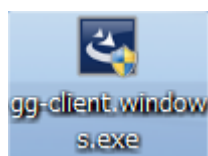


Fig.2-1 GO-Global icon



(2) “GO-Global Client – InstallShield Wizard” is automatically displayed.

Select [Next].

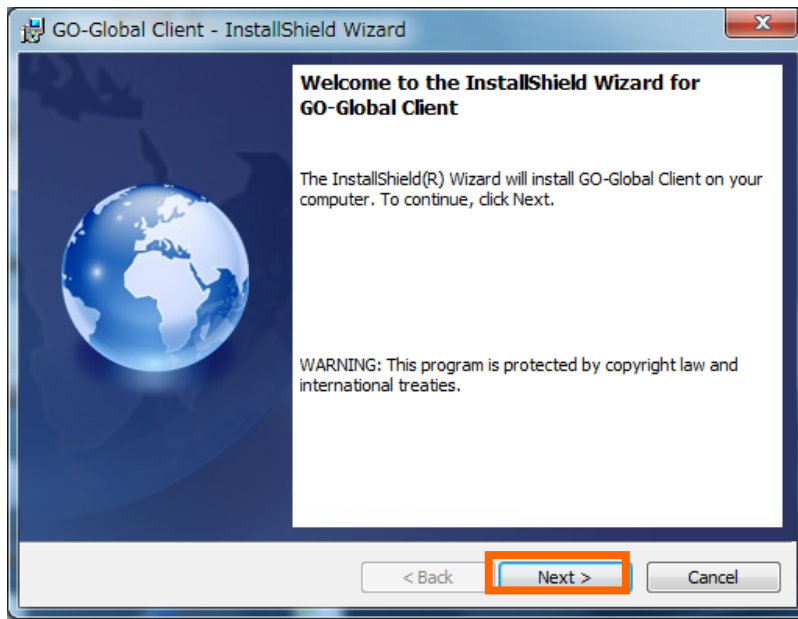


Fig.2-2 GO-Global InstallShield Wizard

(3) “License Agreement” screen is displayed.

Put check mark on “I accept the terms in the license agreement”, and then, select [Next].



Fig.2-3 License Agreement screen

(4) “Destination Folder” screen is displayed. Select [Next].

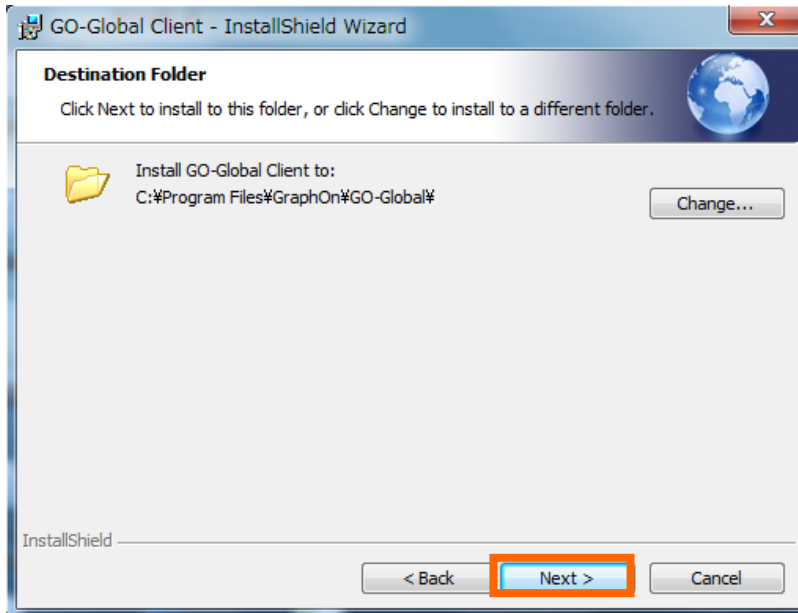


Fig.2-4 Destination Folder screen

(5) “Setup Type” screen is displayed. Make sure that check mark is put on “Complete”, and then, select [Next].

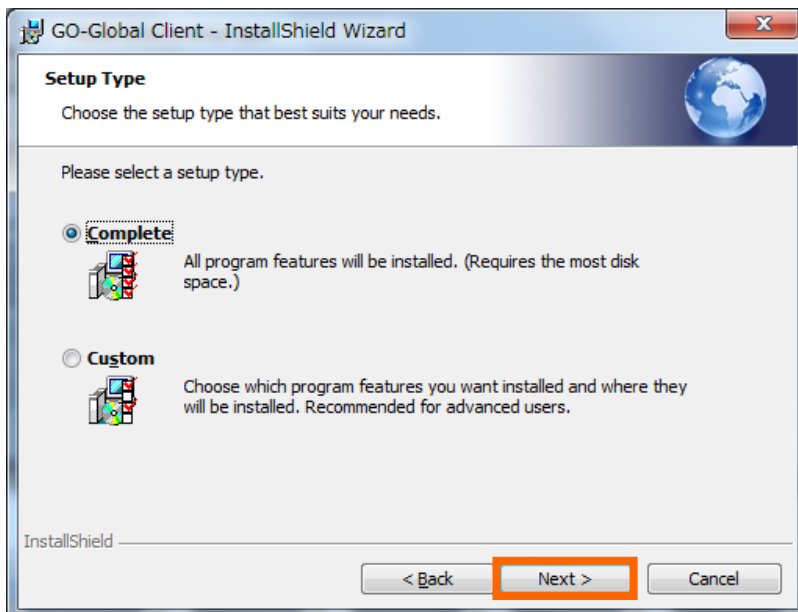


Fig.2-5 Setup Type screen

- (6) “Ready to Update or Repair the Program” screen is displayed. Select [Install].

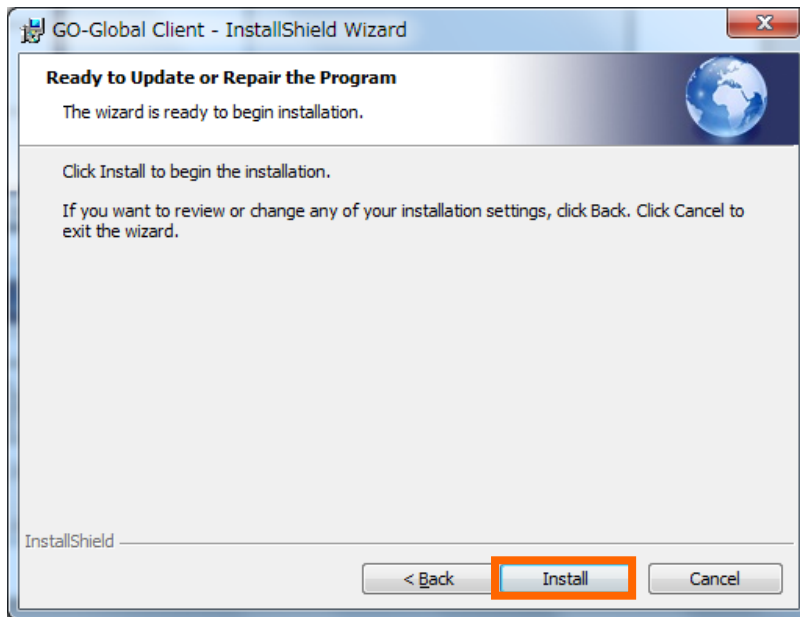


Fig.2-6 Ready to Update or Repair the Program screen

- (7) “InstallShield Wizard Completed” screen is displayed. Select [Finish].

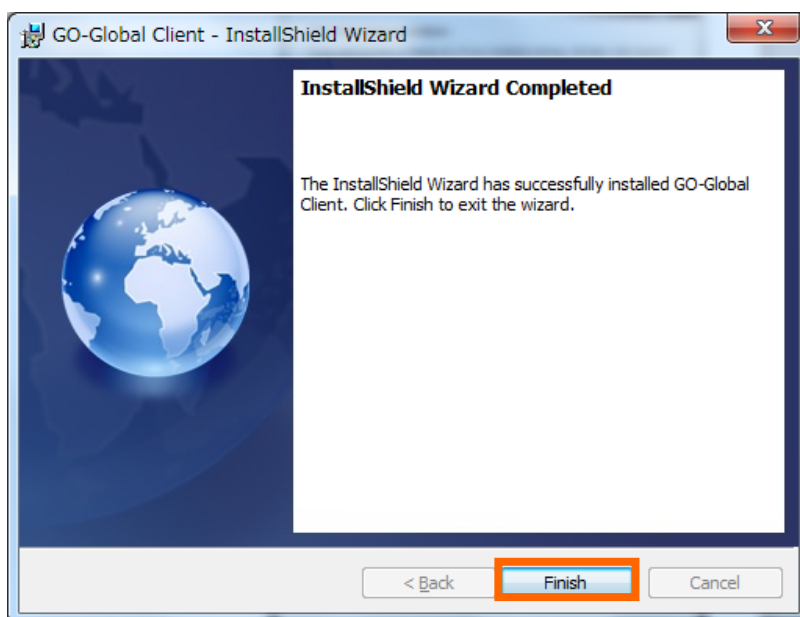


Fig.2-7 InstallShield Wizard Completed screen

(8) On desktop screen, select [Start] -> [All Program] -> [GraphOn GO-Global 4].

Then, make short cut "GO-Global" on desktop screen by drag & drop.

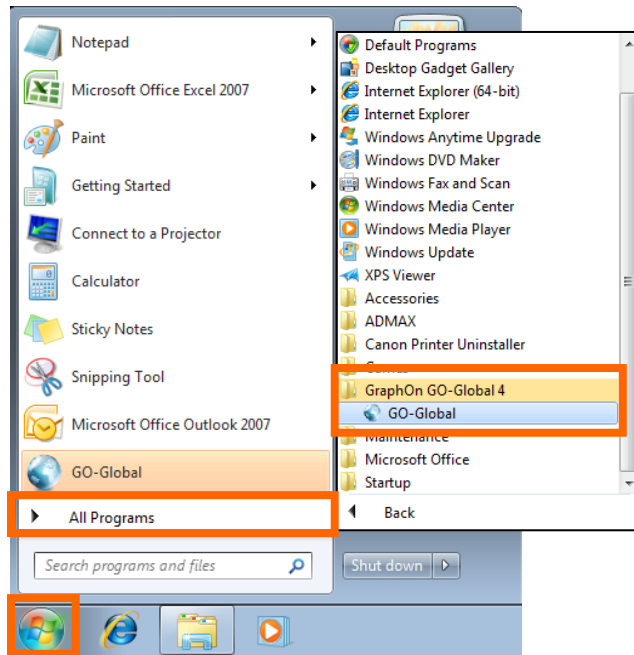


Fig.2-8 Windows screen

### 3. System Start / Stop

#### 3.1 Connect to Application Server

(1) On desktop screen, double-click "GO-Global" icon.



Fig.3-1-1 Short Cut screen

(2) "Connection" screen is displayed. Input "210.149.88.156" in "Host Address", and then, select "Connect".



Fig.3-1-2 Connection screen

(3) GO-Global is started as following screen.

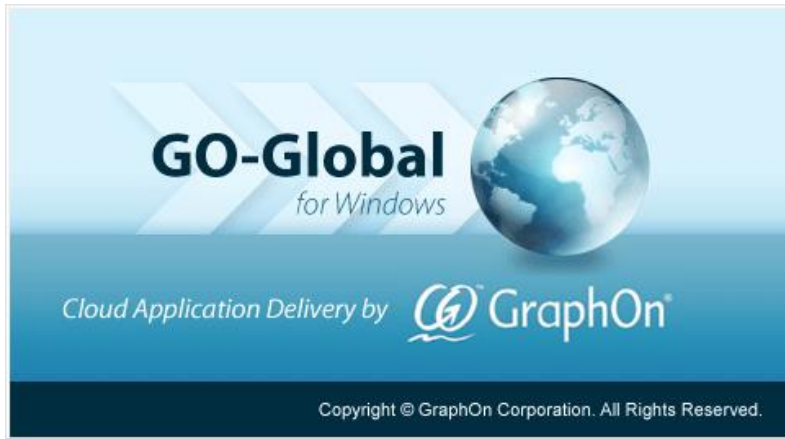


Fig.3-1-3 GO-Global Start screen

(4) "Sign In" screen is displayed. Input "User name" and "Password", and then, select "Sign In".

※"User name" and "Password" are informed to you by other paper.



Fig.3-1-4 Sign In screen

(5) "Program Window on IMC-ITDS01" screen is displayed.

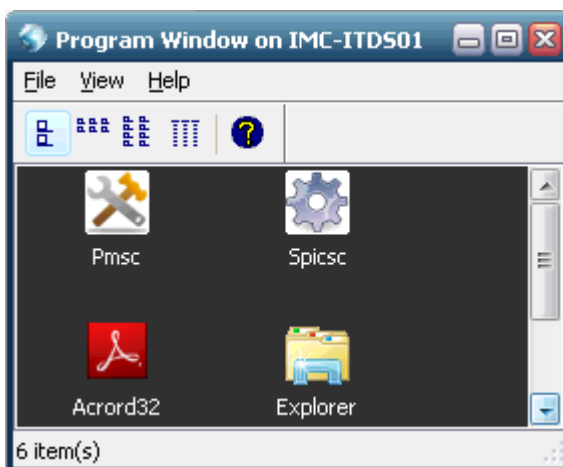


Fig.3-1-5 Program Window on IMC-ITDS01

### 3.2 Start / Stop System

- (1) Double-click "Spicsc" icon on "Program Window on IMC-ITDS01" (Fig.3-1-5).
- (2) "CMAXS PMS[Login]" screen is displayed.  
Enter password and press [Enter] key. As default set, "MAN" (Manager) for administrator authority is registered. Please change user authority and password before actual operation. As for user authority and password.

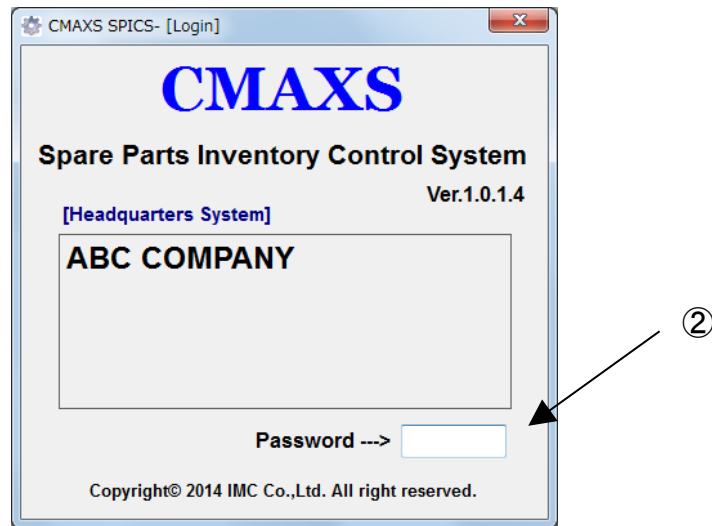


Fig.3-2-1 Login Screen

- (3) "Guidance Dialog"(Fig.3-2-2) is displayed.  
Confirm your login name and authority.
- (4) If you put check mark on the check box,  
"Guidance Dialog"→ "Menu screen" is displayed automatically from next time.

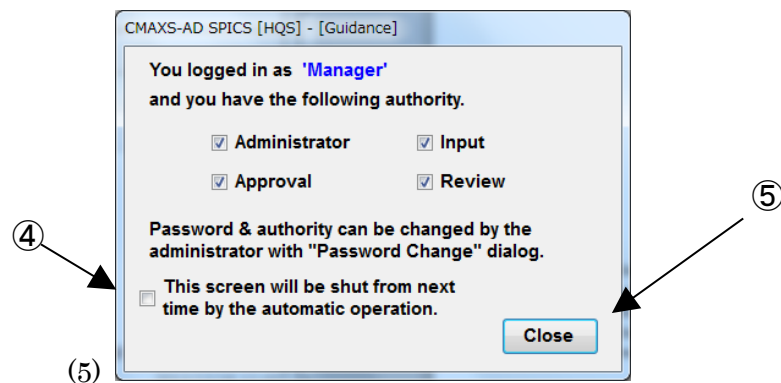


Fig.3-2-2 Guidance Dialog

(5) Select [Close] button on “Guidance Dialog”(Fig.3-2-2).

”Menu Screen”(Fig.3-2-3) is displayed.

(6) If you want to end the system, select [End] button or [x] button of right upper corner.

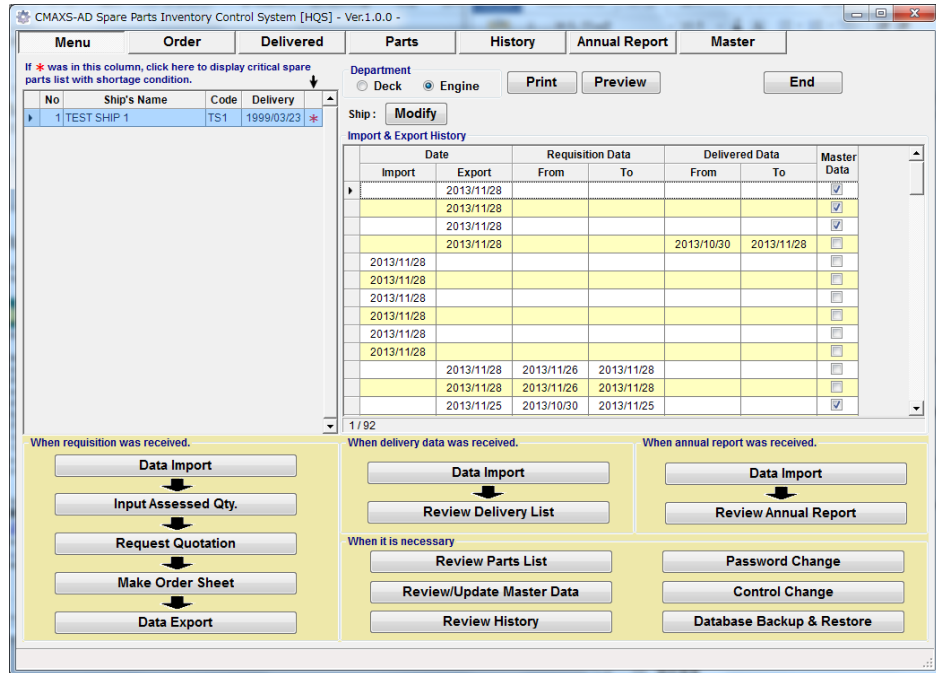


Fig.3-2-3 Menu Screen

## 4. Screen Description

### 4.1 [Menu] Screen

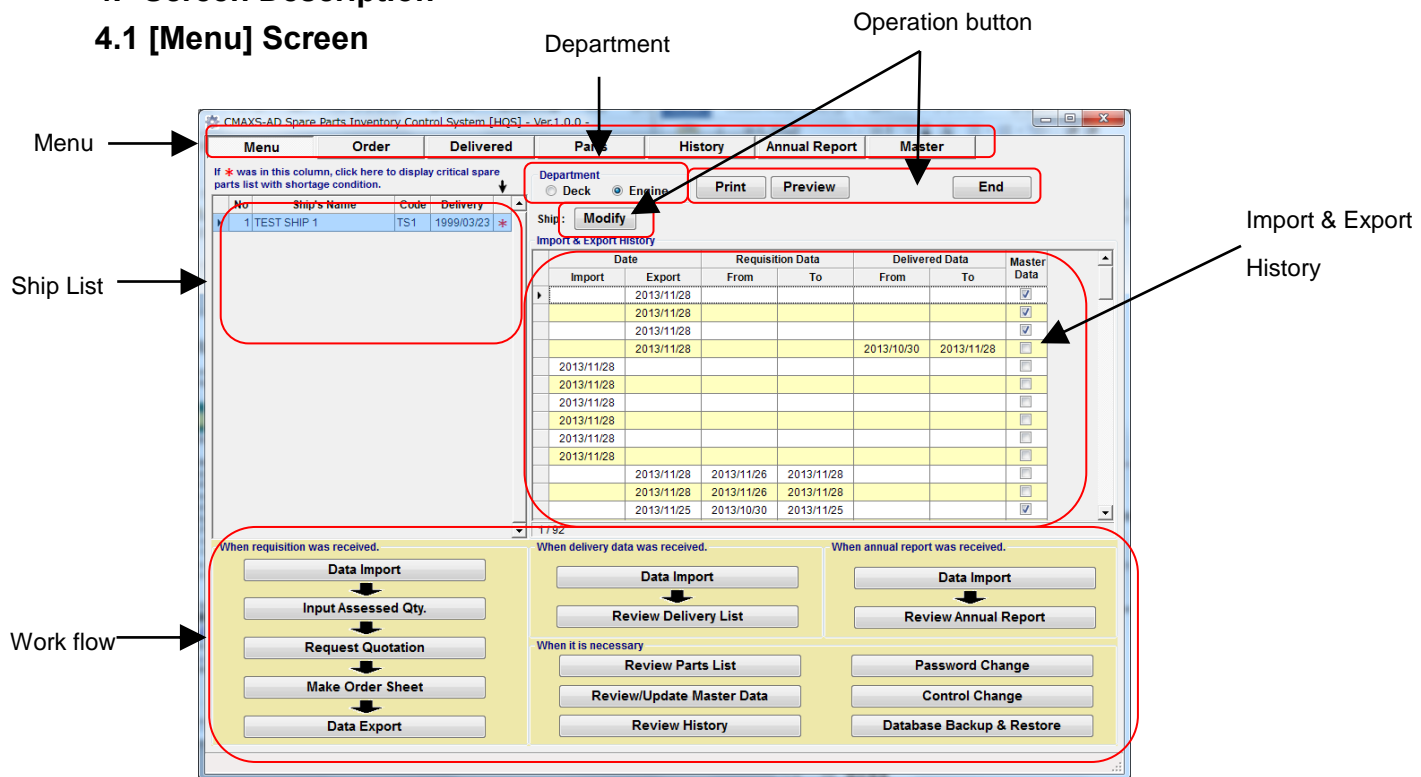


Fig.4-1 Menu Screen

## 4.2 [Parts Order] Screen

Sec.8

Operation button

Information from Shipboard

Ordered Spare Parts Data

Code	Equipment	Parts	Unit	WORK	SPARE	ONHND	ONODR	ORDR	ASSES
E0100000 0220	Main Engine	O-RING FOR COOLING WATER CONNECTION, ID29.5xd3.0 /C/PC		120	20	11	3	3	3
E0100000 0450	Main Engine	O-RING FOR BOTTOM PIECE, ID33xd7.0 /EXH VALVE LOWE/PC		6	4	0	3	1	0
E0100000 0460	Main Engine	PACKING FOR BOTTOM PIECE, ID317.7xd7.0 /EXH VALVE L/PC		6	4	0	3	1	0

(1) Code : Equipment code and/or spare parts code  
 (2) Equipment : Equipment name  
 (3) Parts : Spare parts name  
 (4) Unit : Unit for spare parts  
 (5) Working : Spare parts working quantity  
 (6) Standard : Standard spare parts stock quantity  
 (7) Spare R.O.B : Current spare parts stock quantity  
 (8) ONODR : Un-received spare parts quantity  
 (9) ASSES : Assessed spare parts quantity by Headquarters  
 (10) Item Code : Spare parts drawing + page + item number  
 (11) Cost Code : Cost code for budget control  
 (12) Remarks : Remarks

Fig.4-2 Parts Order Screen

## 4.3 [Order List] Dialog

Operation button

Ordered History

Requisition No.	Delivered Date	Port	Required	Assessed	Order	Total Data
	From	To				
TEST1	2013/10/29	2013/10/29				3
FRE-E13-178	2013/04/15	2013/04/18	Singapore	2013/03/18		88
FRE-E13-118	2013/03/10	2013/03/31	Singapore	2013/01/29		51
FRE-E13-112	2013/01/22	2013/01/22	SINGAPORE	2013/01/17		2
	2013/01/01	2013/01/15	Singapore	2012/11/17		88
FRE-E12-112	2012/10/15	2012/11/30	Rotterdam	2012/10/15		1
FRE-E12-132	2012/09/20	2012/10/20	Rotterdam or Suez	2012/10/08		1
FRE-E12-126	2012/08/13	2012/08/18	Ulsan	2012/08/10		2
FR-112-111	2012/09/11	2012/09/15	Ulsan or 2nd Singapore			102
FR-112-111	2012/08/15	2012/08/15	Singapore			20
FR-112-111	2012/06/30	2012/06/30	ULSAN / 2nd SINGAPORE			20
FRE-E12-112	2012/05/31	2012/05/31	SINGAPORE	2012/05/0		2
FRE-E12-087	2012/05/01	2012/05/31	SINGAPORE	2012/04/11		5
FRE-E12-085	2012/05/01	2012/05/31	SINGAPORE	2012/04/01		99
FRE-E11-246	2011/12/03	2011/12/31	ULSAN / 2nd SINGAPORE	2011/12/02		1
FRE-E11-226	2011/11/22	2011/12/31	ULSAN / 2nd SINGAPORE	2011/11/22		76
FRE-E11-168	2011/09/30	2011/10/08	ULSAN / SINGAPORE	2011/09/17		1
FRE-E11-126	2011/09/01	2011/09/30	1st SINGAPORE	2011/07/26		30
FRE-E11-101 (Amend)	2011/07/11	2011/07/10	ROTTERDAM	2011/06/28		6
FRE-E11-072	2011/06/15	2011/07/15	SINGAPORE	2011/05/08		92

① Requisition No.  
 ② Delivered Date.  
 ③ Port  
 ④ Required  
 ⑤ Assessed  
 ⑥ Order  
 ⑦ Total Data

Fig.4-3 Order List Dialog



#### 4.4 [Delivered Parts List] Screen

Sec.9

Operation button

Information from Shipboard

Delivered Spare Parts Data

(1) Code : Equipment code and/or spare parts code  
 (2) Equipment : Equipment name  
 (3) Parts : Spare parts name  
 (4) SMS : Spare parts type  
 (This title can be changed. Refer to Section 15)  
 (5) Part Code : Maker's spare parts' code  
 (6) Drawing No : Drawing Number  
 (7) Unit : Unit for spare parts  
 (8) Working : Spare parts working quantity  
 (9) Standard : Standard spare parts stock quantity  
 (10) Spare R.O.B : Current spare parts stock quantity  
 (11) ONODR : Un-received spare parts quantity  
 (12) ASSES : Assessed spare parts quantity by Headquarters  
 (13) DELIV : Delivered spare parts quantity  
 (14) Item Code : Spare parts drawing + page + item number  
 (15) Cost Code : Cost code for budget control  
 (16) Remarks : Remarks

Fig.4-4 Delivered Parts List Screen

#### 4.5 [Delivered List] Dialog

Delivered List

Delete Print Preview OK Close

Delivered History

① Delivered Date  
 ② Port Name  
 ③ Requisition No.  
 ④ Made on Date  
 ⑤ Total Data.

Delivered Date	Delivered Port	Requisition No.	Made on Date	Total Data
2013/11/28	TOKYO	TEST1	2013/11/28	1 / 1
2013/01/25		FRE-E13-012		0 / 2
2012/08/13	Singapore	FRE-E12-189	2012/09/01	5 / 5
2012/08/21	Taipei	FRE-E12-226	2012/09/01	2 / 2
2012/08/13	Singapore & Taipei	FRE-E12-193	2012/09/01	103 / 108
2012/05/21	Singapore	FER-E12-105	2012/05/22	3 / 3
2012/05/21	singapore	FRE-E12-087	2012/05/22	5 / 5
2012/05/21	SINGAPORE	FRE-E12-085	2012/05/23	98 / 99
2012/01/03	ULSAN	FRE-E11-168	2012/01/04	1 / 1
2012/01/03	ULSAN	FRE-E11-22		
	JLSAN	FRE-E11-24		
	SINGAPORE	FRE-E11-12		
	ROTTERDAM	FRE-E11-101 (Amend)	2011/07/08	6 / 6
2011/07/07	ROTTERDAM	FRE-E11-072	2011/07/08	90 / 92
2011/01/18	Singapore	FRE-E10-170	2011/01/20	90 / 104
2010/12/10		FRE-E10-151	2010/12/19	53 / 53
2010/09/09	Singapore	FRE-SPICS-002	2010/09/13	35 / 35
2010/07/11	Singapore	FRE-SPICS-001	2010/07/16	7 / 7

Fig.4-5 Delivered List Dialog

## 4.6 [Parts List] Screen

Sec. 18.1 →

Sec. 18.2 →

Spare Parts List

**Legend:**

- (1) Code : Equipment code and/or spare parts code
- (2) Equipment : Equipment name
- (3) Parts : Spare parts name
- (4) SMS : Spare parts type  
(This title can be changed. Refer to Section 16)
- (5) Part Code : Maker's spare parts' code
- (6) Drawing No. : Drawing Number
- (7) Unit : Unit for spare parts
- (8) Working : Spare parts working quantity
- (9) Standard : Standard spare parts stock quantity
- (10) Spare R.O.B : Current spare parts stock quantity
- (11) ONODR : Un-received spare parts quantity
- (12) Required : Required Quantity
- (13) Item Code : Spare parts drawing + page + item number
- (14) Cost Code : Cost code for budget control
- (15) Price : Price
- (16) Store : Store Location code and name
- (17) Remarks : Remarks

Fig.4-6 Parts List Screen

## 4.7 [Parts Detail] Dialog

Spare Parts Data

Consumption, Order & Delivered History

Page Scroll

**History Table:**

Made On	Qty.	Code	Maintenance Item	Qty.	Order Requisition No.	Qty.	Port	Unit Price
0 / 0								

Fig.4-7 Parts Detail Dialog

## 4.8 [History (Consumed Parts)] Screen

Sec. 18.2

Sec. 18.1

View Select "Ordered" or "Delivered"

Consumed spare parts data

(1) Code : Equipment code and/or spare parts code  
(2) Equipment : Equipment name  
(3) Parts : Spare parts name  
(4) Date : Consumed date  
(5) Consumed : Consumed spare parts quantity  
(6) Maintenance Code : Maintenance Code  
(7) Maintenance Item : Maintenance Item  
(8) Item Code : Spare parts drawing + page + item number  
(9) Cost Code : Cost code for budget control

Fig.4-8 History (Consumed Parts) Screen

## 4.9 [History (Ordered Parts)] Screen

Sec. 18.2

Sec. 18.1

View Select "Consumed" or "Delivered"

Required spare parts data

(1) Code : Equipment code and/or spare parts code  
(2) Equipment : Equipment name  
(3) Parts : Spare parts name  
(4) Date : Ordered date  
(5) Order : Ordered spare parts quantity  
(6) Requisition No. : Requisition No.  
(7) Supp. : Supplier Code  
(8) Price (Unit) : Spare parts unit price  
(9) Price (Total) : Spare parts unit price x quantity  
(10) Item Code : Spare parts drawing + page + item number  
(11) Cost Code : Cost code for budget control

Fig.4-9 History (Ordered Parts) Screen

## 4.10 [History (Delivered Parts)] Screen

Sec. 18.1

Sec. 18.2

View Select "Consumed" or "Ordered"

Delivered spare parts data History

(1) Code : Equipment code and/or spare parts code  
 (2) Equipment : Equipment name  
 (3) Parts : Spare parts name  
 (4) Date : Delivery date  
 (5) DELIV : Delivered spare parts quantity  
 (6) Port : Delivery port  
 (7) Price (Unit) : Spare parts unit price  
 (8) Price (Total) : Spare parts unit price x quantity  
 (9) Item Code : Spare parts drawing + page + item number  
 (10) Cost Code : Cost code for budget control

Fig.4-10 History (Delivered Parts) Screen

## 4.11 [Annual Report] Screen

Display another annual report

Property of annual report

Spare parts annual report

(1) Code : Equipment code and/or spare parts code  
 (2) Equipment : Equipment name  
 (3) Parts : Spare parts name  
 (4) SMS : Spare parts type  
 (5) Part Code : Maker's spare parts' code  
 (6) Drawing No. : Drawing Number  
 (7) Unit : Unit for spare parts  
 (8) Working : Spare parts working quantity  
 (9) Standard : Standard spare parts stock quantity  
 (10) Spare R.O.B (Last) : Last spare parts stock quantity  
 (11) Spare R.O.B (Curr.) : Current spare parts stock quantity  
 (12) Total (Consumed) : Total consumed parts quantity  
 (13) Total (Order) : Total ordered parts quantity  
 (14) Total (DELIV) : Total delivered parts quantity  
 (15) Item Code : Spare parts drawing + page + item number  
 (16) Cost Code : Cost code for budget control  
 (17) Price (Unit) : Spare parts unit price  
 (18) Price (Total) : Spare parts unit price x quantity

Fig.4-11 Annual Report Screen

## 4.12 [Master List (Equipment)] Screen

View Select  
"Stores" or  
"Suppliers"

Equipment data

CMAXS-AD Spare Parts Inventory Control System [HQS] - Ver.1.0.0 -

Menu Order Delivered Parts History Annual Report Master

TEST SHIP 1 (Engine) - Master -

Detail Master Data

Equipments Stores Suppliers

Code	Name	Type	Model	Maker
E0100000	Main Engine		MAN B&W 6S50MC6	Hitachi Zosen D&E
E0110000	M/E Turbo Charger		TPL73B-12	ABB Turbo System
E0120000	M/E Air Cooler	FW Cooling		Tokai SB&E
E0150000	M/E Exhaust Valve Grinding Machine		SEQ	Wakefield Corp
E0160000	M/E Pneumatic Control System			Nabtesco
E0161000	M/E C/R Control System & Safety System			Nabtesco
E0164000	M/E Pneumatic Control Equipment			Mecman Japan
E0168000	M/E Main Starting Valve		HMD-FA-100S	Halla Automatic Valve
E0170000	M/E Electric Governor		MG800	Nabtesco
E0180000	M/E Cylinder Lubricator			
E0185000	M/E Oil Mist Detector		MD-9M	
E0186000	M/E P-Max Actuator			
E0187000	M/E Fuel Valve Testing Device			
E0188000	M/E FO Flowmeter	Rotary Flowmeter	RSA0025B0DD12	
E0189000	Bridge console			
E0200000	Generator Diesel Engine		6N21AL-SV	
E0210000	G/E Turbo-Charger		RH183	
E0215000	G/E LO Priming Pump		GV-25	
E0220000	Main Generator			
E0300000	Aux. Boiler	Water Tube Type	M/VW-150	Tortoise Engineering
E0310000	Exhaust Gas Economizer	Bare Tube Type	MECB III	Tortoise Engineering
E0320000	Oil Burning Apparatus		SDR-1500	Sunflame
E0400000	Main Air Compressor		C300	Yanmar
E0450000	Main Air Reservoir		4M3x2 94MPa	Hemmi Iron

17 / 184

- (1) Code : Equipment code
- (2) Name : Equipment name
- (3) Type : Equipment type
- (4) Model : Equipment model
- (5) Maker : Equipment's Maker

Fig.4-12 Master List (Equipment) Screen

## 4.13 [Master List (Store)] Screen

View Select  
"Equipment" or  
"Suppliers"

Store data

CMAXS-AD Spare Parts Inventory Control System [HQS] - Ver.1.0.0 -

Menu Order Delivered Parts History Annual Report Master

TEST SHIP 1 (Engine) - Master -

Detail Master Data

Equipments Stores Suppliers

Code	Name

1 / 1

- (1) Code : Store code
- (2) Name : Store name

Fig.4-13 Master List (Store) Screen

## 4.14 [Master List (Suppliers)] Screen

View Select  
"Equipment" or  
"Store"

Equipment data

CMAXS-AD Spare Parts Inventory Control System [HQS] - Ver.1.0.0 -

Menu Order Delivered Parts History Annual Report Master

TEST SHIP 1 (Engine) - Master -

Detail Master Data Modify Append Delete Print Preview Menu

Equipments Stores Suppliers

Code	Name	PIC	E-Mail	TEL
---	Test01	test 01	test@test.com	123456
002	test 02	test 02	test02@test02.com	654321
003	Panel	Komatsu		
LU0	035 Jinsan Marine	Roy	jinsan@marine.kr	1233456

4 / 4

(1) Code : Supplier Code  
(2) Name : Supplier name  
(3) PIC : Person In Charge  
(4) E-Mail : E-Mail of PIC  
(5) TEL : TEL of PIC

Fig.4-14 Master List (Suppliers) Screen

## 5. Check Critical Spare Parts with Shortage condition

If there was critical spare parts with shortage condition, [\*] mark is shown on Menu Screen.

- (1) On the "Menu Screen"(Fig.5-1), select [\*] mark on Ship list.
- (2) "Critical Spare Parts list with shortage condition Screen"(Fig.5-2) is displayed.
- (3) Select [Menu] to return to "Menu Screen".

CMAXS-AD Spare Parts Inventory Control System [HQS] - Ver.1.0.0 -

Menu Order Delivered Parts History Annual Report Master

TEST SHIP 1 (Engine) - Menu -

Detail Parts Data Modify Filter Print Preview Menu

Code Search View All Parts Shortage (REQD > 0) Undelivered (ONOKR > 0) Confirm (Revised marks put at SBS are cleared.)

Code	Equipment	Parts	TMSA	Part Code	Drawing No.	Unit
E0100000	0080 Main Engine	PISTON RINGS (TOP RING), D509x112.5	AFC	90201-0204A 072	1001-06	PC
E0100000	0090 Main Engine	PISTON RINGS (2ND, 3RD & 4TH RINGS), D509x79.5	AFC	90201-0204A 096	1001-07	PC
E0100000	0220 Main Engine	O-RING FOR COOLING WATER CONNECTION, ID29.5x33.0 ICYL LINE	AFC	90302-0185B 010	0508-01 EH1703	PC
E0100000	0670 Main Engine	SEALING RING FOR PUMP BARREL, OD115 IFUEL PUMP	AFC	90901-0117C 520	3603-07	PC
E0100000	0790 Main Engine	O-RING FOR HOLDER, ID50.16x55.32 IFUEL VALVE	AFC	90910-0079C 14	1701-01 (B)	PC
E0100000	0820 Main Engine	GASKET FOR SAFETY VALVE, OD194x121x1	BFC	91101-0037B H0	2001-25	PC
E0200000	0410 Generator Diesel Engine	O-RING FOR FUEL INJECTION PUMP, OD55.6x33.1	AFC	14667351812.3		PC
E0200000	0430 Generator Diesel Engine	O-RING FOR FUEL INJECTION PUMP, OD55.6x33.1	AFC	14667351831.3		PC
E0200000	0590 Generator Diesel Engine	O-RING FOR TURBOCHARGER, OD52.7x33.5	BFC	24316000460 D		PC
E0210000	0040 G/E Turbo-Charger	JOURNAL BEARING, OD38.05x43.2	AFC		NU25942N38	PC
E0210000	0060 G/E Turbo-Charger	THRUST BEARING, D111	AFC		NU25942N35	PC
E0210000	0080 G/E Turbo-Charger	TURBINE & COMPRESSOR SIDE SEAL RING, OD40x73	AFC	#621222C3		PC
E0320000	0140 Oil Burning Apparatus	BEARING FOR P.D. FAN MOTOR, OD10x60x722 OIL BURNER	AFC	R14x60x722	1MPA	PC
E0320000	0240 Oil Burning Apparatus	OMNI SEAL, OD32x40x25x74.5 FO PUMP FOR OIL BURNER FTP-N20H	AFC	D25		PC
E0320000	0410 Oil Burning Apparatus	O-RING FOR PIPING UNIT ROTARY CUP BNR. FOR OIL BURNER	BFC	JIS B2401 P20		PC
E0320000	0450 Oil Burning Apparatus	O-RING FOR PIPING UNIT ROTARY CUP BNR. FOR OIL BURNER	BFC	JIS B2401 P8		PC
E0500000	0290 FO Purifier	O-RING, OD40.7x33.5 #1 FO PURIFIER SJ300	AFC	A10034A		PC
E0500000	0340 FO Purifier	O-RING, OD34.7x33.5 #1 FO PURIFIER SJ300	AFC	A10035A		PC
E0500000	0350 FO Purifier	O-RING, OD16x33.5 #1 FO PURIFIER SJ300	AFC	A20155A		PC
E0500000	0370 FO Purifier	O-RING, OD40.6x33.1 #1 FO PURIFIER SJ300	BFC	A20035A		PC
E0500000	0380 FO Purifier	O-RING, OD40.6x33.1 #1 FO PURIFIER SJ300	BFC	A20035A		PC
E0500000	0480 FO Purifier	O-RING, OD90x55.1 #1 FO PURIFIER SJ300	AFC	A00080A		PC

8 / 87

Fig.5-1 Menu Screen

CMAXS-AD Spare Parts Inventory Control System [HQS] - Ver.1.0.0 -

Menu Order Delivered Parts History Annual Report Master

TEST SHIP 1 (Engine) - Parts List (Critical) -

Detail Parts Data Modify Filter Print Preview Menu

Code Search View All Parts Shortage (REQD > 0) Undelivered (ONOKR > 0) Confirm (Revised marks put at SBS are cleared.)

Code	Equipment	Parts	TMSA	Part Code	Drawing No.	Unit
E0100000	0080 Main Engine	PISTON RINGS (TOP RING), D509x112.5	AFC	90201-0204A 072	1001-06	PC
E0100000	0090 Main Engine	PISTON RINGS (2ND, 3RD & 4TH RINGS), D509x79.5	AFC	90201-0204A 096	1001-07	PC
E0100000	0220 Main Engine	O-RING FOR COOLING WATER CONNECTION, ID29.5x33.0 ICYL LINE	AFC	90302-0185B 010	0508-01 EH1703	PC
E0100000	0670 Main Engine	SEALING RING FOR PUMP BARREL, OD115 IFUEL PUMP	AFC	90901-0117C 520	3603-07	PC
E0100000	0790 Main Engine	O-RING FOR HOLDER, ID50.16x55.32 IFUEL VALVE	AFC	90910-0079C 14	1701-01 (B)	PC
E0100000	0820 Main Engine	GASKET FOR SAFETY VALVE, OD194x121x1	BFC	91101-0037B H0	2001-25	PC
E0200000	0410 Generator Diesel Engine	O-RING FOR FUEL INJECTION PUMP, OD55.6x33.1	AFC	14667351812.3		PC
E0200000	0430 Generator Diesel Engine	O-RING FOR FUEL INJECTION PUMP, OD55.6x33.1	AFC	14667351831.3		PC
E0200000	0590 Generator Diesel Engine	O-RING FOR TURBOCHARGER, OD52.7x33.5	BFC	24316000460 D		PC
E0210000	0040 G/E Turbo-Charger	JOURNAL BEARING, OD38.05x43.2	AFC		NU25942N38	PC
E0210000	0060 G/E Turbo-Charger	THRUST BEARING, D111	AFC		NU25942N35	PC
E0210000	0080 G/E Turbo-Charger	TURBINE & COMPRESSOR SIDE SEAL RING, OD40x73	AFC	#621222C3		PC
E0320000	0140 Oil Burning Apparatus	BEARING FOR P.D. FAN MOTOR, OD10x60x722 OIL BURNER	AFC	R14x60x722	1MPA	PC
E0320000	0240 Oil Burning Apparatus	OMNI SEAL, OD32x40x25x74.5 FO PUMP FOR OIL BURNER FTP-N20H	AFC	D25		PC
E0320000	0410 Oil Burning Apparatus	O-RING FOR PIPING UNIT ROTARY CUP BNR. FOR OIL BURNER	BFC	JIS B2401 P20		PC
E0320000	0450 Oil Burning Apparatus	O-RING FOR PIPING UNIT ROTARY CUP BNR. FOR OIL BURNER	BFC	JIS B2401 P8		PC
E0500000	0290 FO Purifier	O-RING, OD40.7x33.5 #1 FO PURIFIER SJ300	AFC	A10034A		PC
E0500000	0340 FO Purifier	O-RING, OD34.7x33.5 #1 FO PURIFIER SJ300	AFC	A10035A		PC
E0500000	0350 FO Purifier	O-RING, OD16x33.5 #1 FO PURIFIER SJ300	AFC	A20155A		PC
E0500000	0370 FO Purifier	O-RING, OD40.6x33.1 #1 FO PURIFIER SJ300	BFC	A20035A		PC
E0500000	0380 FO Purifier	O-RING, OD40.6x33.1 #1 FO PURIFIER SJ300	BFC	A20035A		PC
E0500000	0480 FO Purifier	O-RING, OD90x55.1 #1 FO PURIFIER SJ300	AFC	A00080A		PC

8 / 87

Fig.5-2 Critical Spare Parts list with shortage condition Screen



## 6. Review Requisition & Make Assessment

(1) On the "Menu Screen"(Fig.6-1), select [Data Import].

[Open Dialog](Fig.6-2) is displayed.

(2) Select file for import. Then, select [Open].

File name is decided by your company's standard.

Standard file name of our system is shown for your reference.

SPICS\_SBS\_aaa\_yymmdd-mmdd.zip

aaa: Ship code

yymmdd-mmdd: Export period.

(3) Select [OK] at Data Import dialog.

(4) Import history is recorded on "Import & Export History".

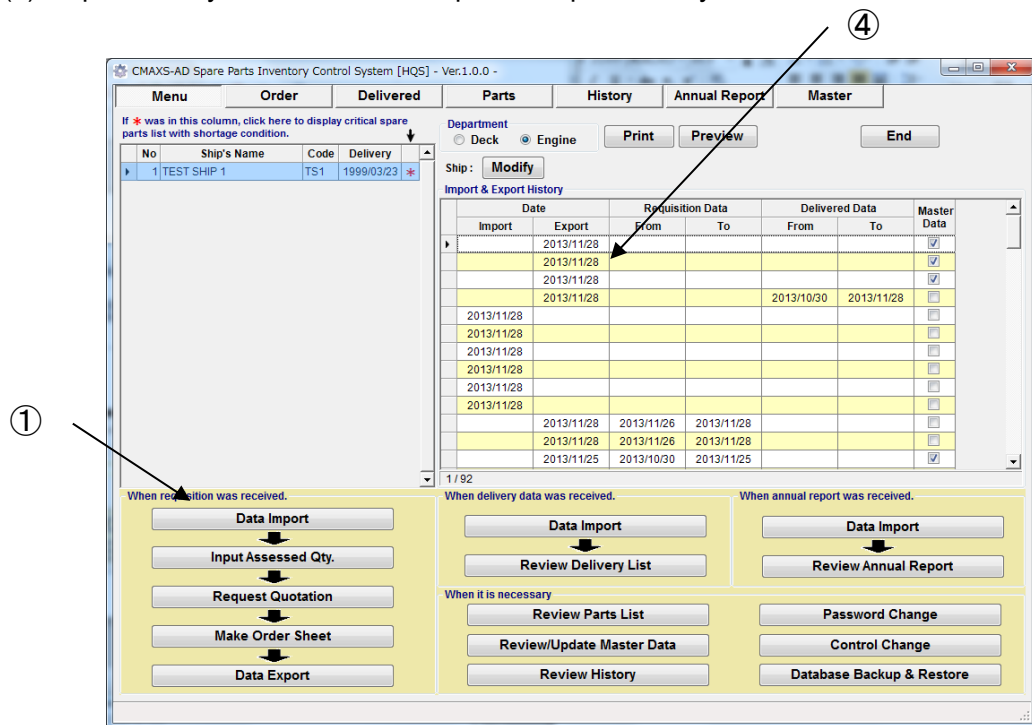


Fig.6-1 Menu Screen

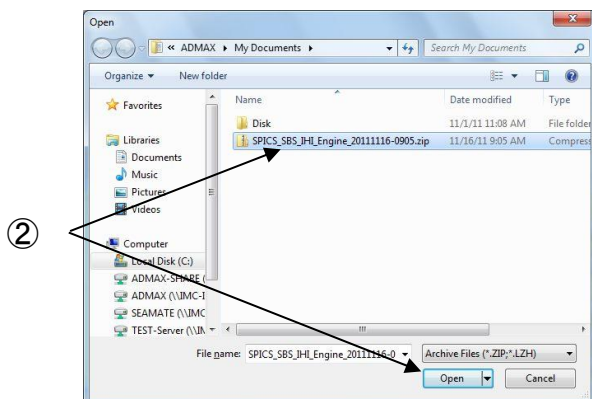


Fig.6-2 Open Dialog

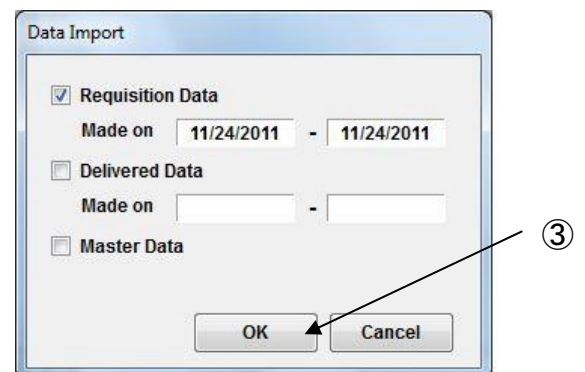


Fig.6-3 Import Dialog

- (5) On the "Menu Screen"(Fig.6-4), select [Input Assessed Qty].
- (6) "Parts Order Screen"(Fig.6-5) with import items is displayed.
- (7) If you want to see other Requisition No data,  
Select [Select Requisition No.], then "Order List Screen" (Fig.6-6)  
and other import data is displayed.
- (8) Select subject and [OK], then other data are displayed on Parts Order Screen"(Fig.6-5).

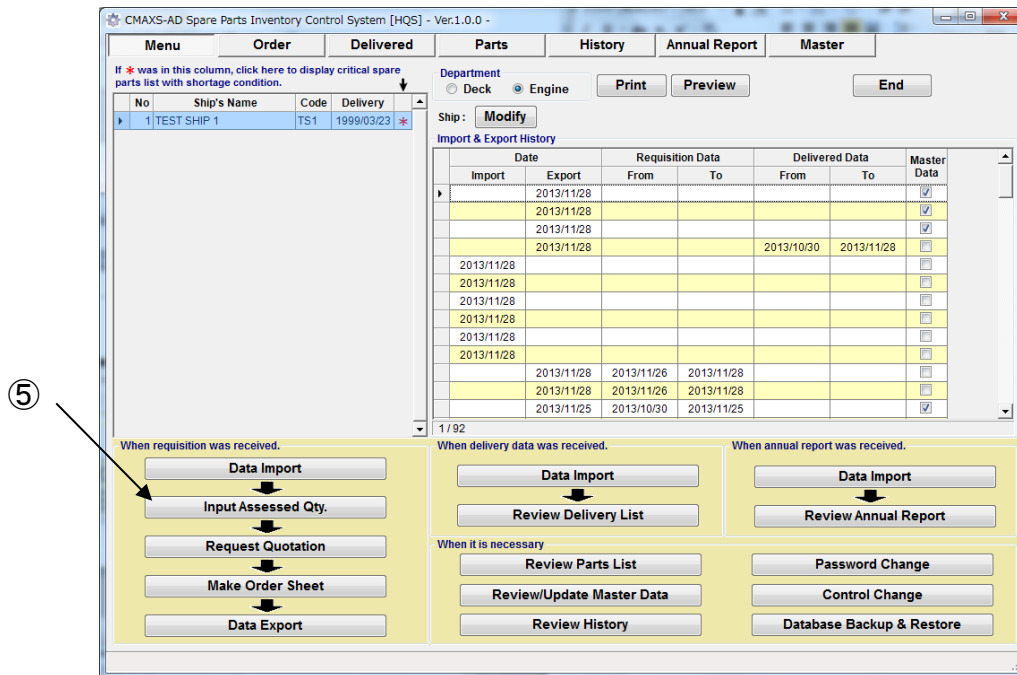


Fig.6-4 Menu Screen

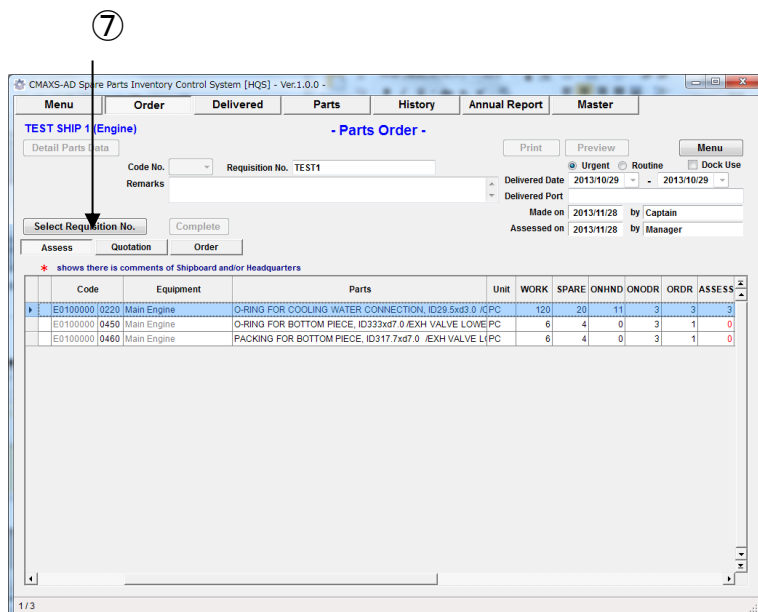


Fig.6-5 Parts Order Screen

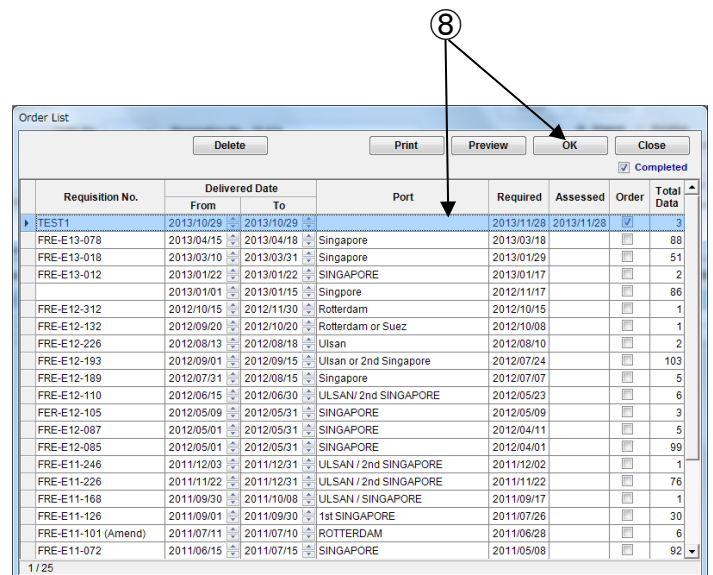


Fig.6-6 Order List Screen



- (9) If there is a comment from shipboard, [\*] is shown, on left side potion.
- (10) Select [\*] mark, "Requisition Comment Screen" (Fig.6-8) is displayed and it can be changed.
- (11) Select [Close], the screen is closed.
- (12) Select Item & [Detail Parts Data], then Parts screen (Fig.6-9) is displayed.
- (13) If you want to print information of "Parts Screen", select [Print].
- (14) If you want to see print preview, select [Preview]
- (15) Select [Close], the screen is closed.
- (16) Enter quantity of assessment.

This modified assessment is saved on database at this time.

- (17) Select [Menu], then return to "Menu Screen".

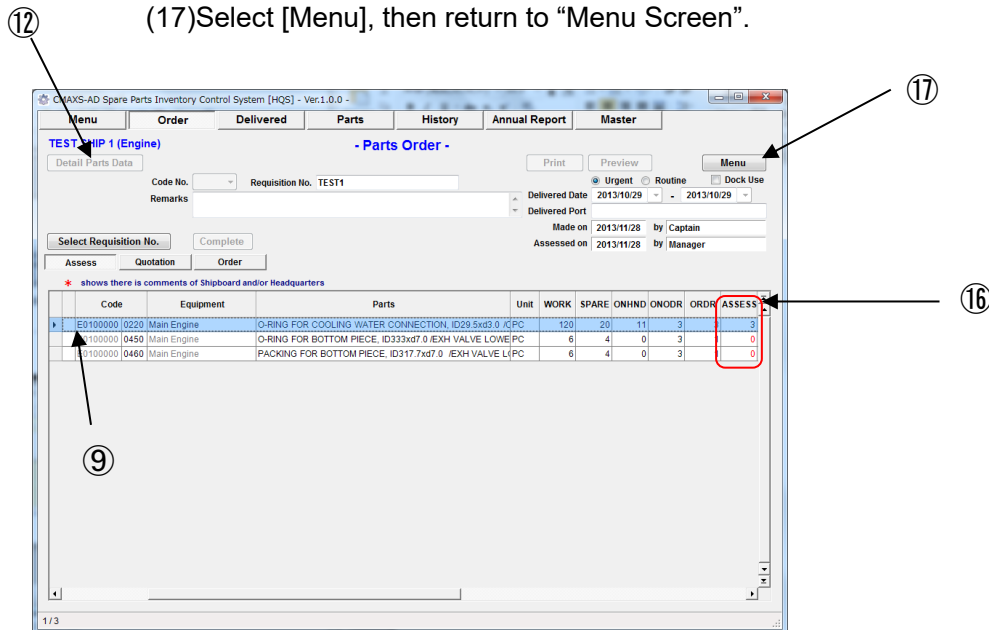


Fig.6-7 Order Screen

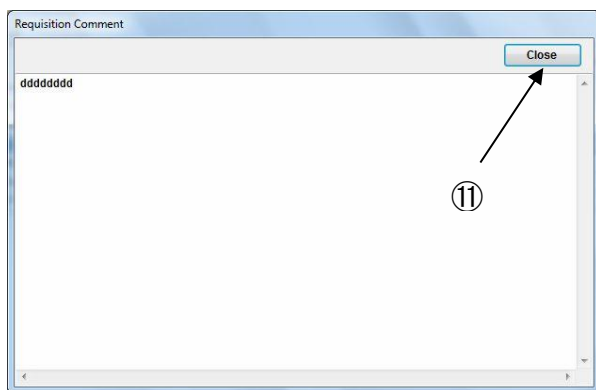
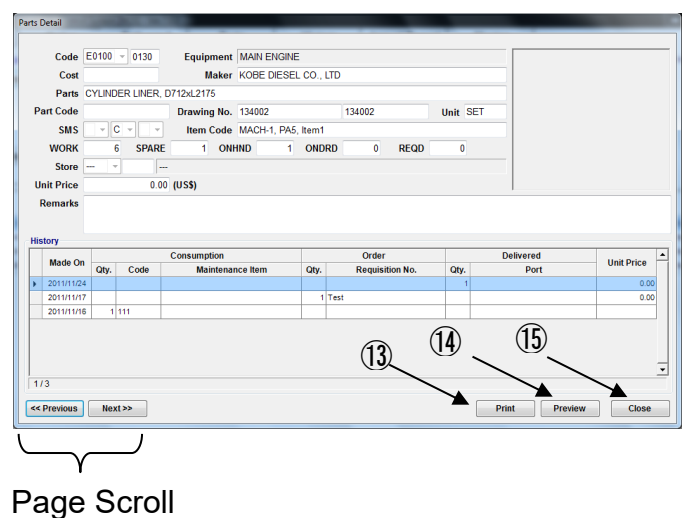


Fig.6-8 Requisition Comment Screen



Page Scroll

Fig.6-9 Parts Detail Screen

## 7. Make Quotation Sheet

- (1) On the "Menu Screen"(Fig.7-1), select [Request Quotation].
- (2) "Order Screen" (Fig.7-2) is displayed.
- (3) If you want to make Quotation Sheet from other import data, select [Requisition No.]
- (4) If there is a comment from shipboard,  
[\*] is shown on left side potion. Then select it,  
Requisition Comment Screen is displayed and it can be changed.

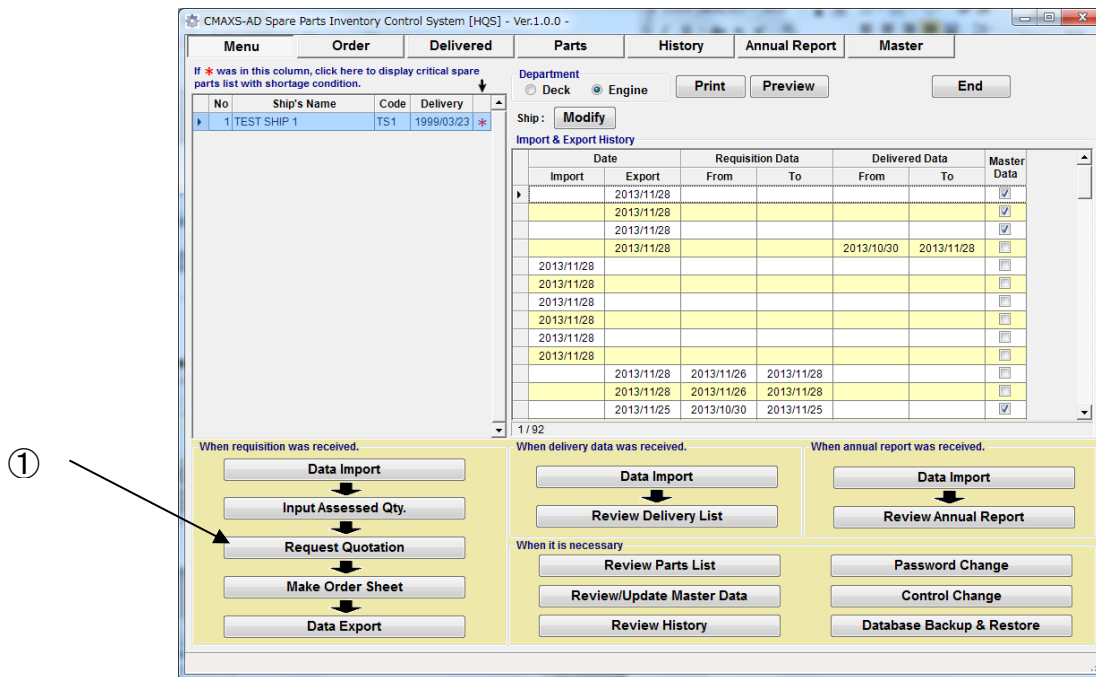


Fig.7-1 Menu Screen

- (5) If you want to see detail information of this item, select [Detail Parts Data].
- (6) If you want to print Parts Requisition List, Select [Print].
- (7) If you want to see print preview, select [Preview].

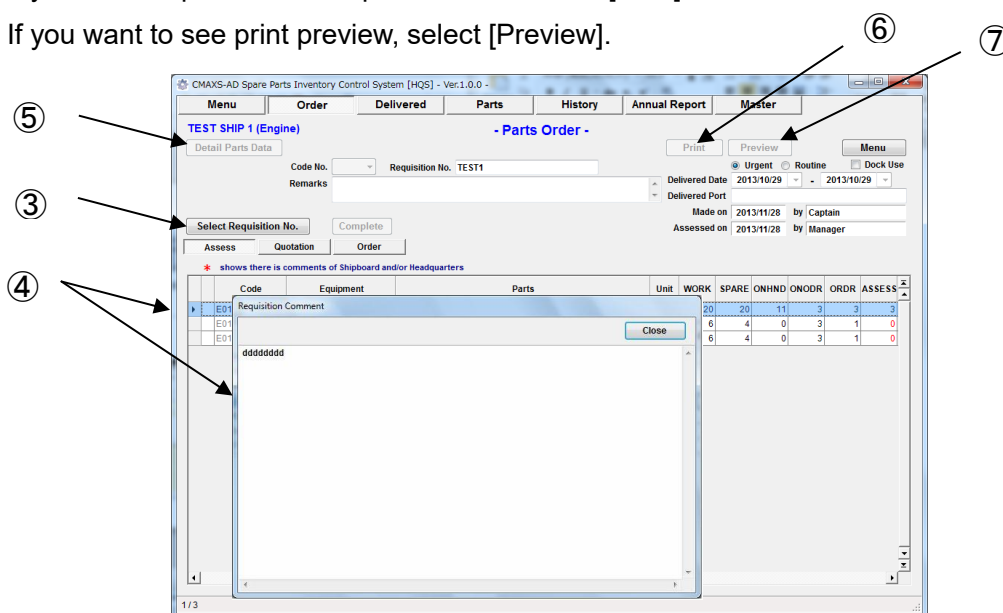


Fig.7-2 Order Screen

- (8) Click [▼], and select supplier from drop down list.
- (9) Supplier can be set maximum 10 suppliers.
- (10)After select supplier, put check mark only you need item for quotation sheet.
- (11)After select supplier, check [•] option button to make quotation sheet by Excel.
- (12)Select [Export], Save as dialog is displayed.
- (13)Select “OK” button, then quotation sheet can be made by Excel.
- (14)Send quotation sheet to supplier.
- (15)(\*If necessary) When you get replying this quotation sheet from supplier, select [Import] to import it.
- (16)Select [Menu], then return to “Menu Screen”.

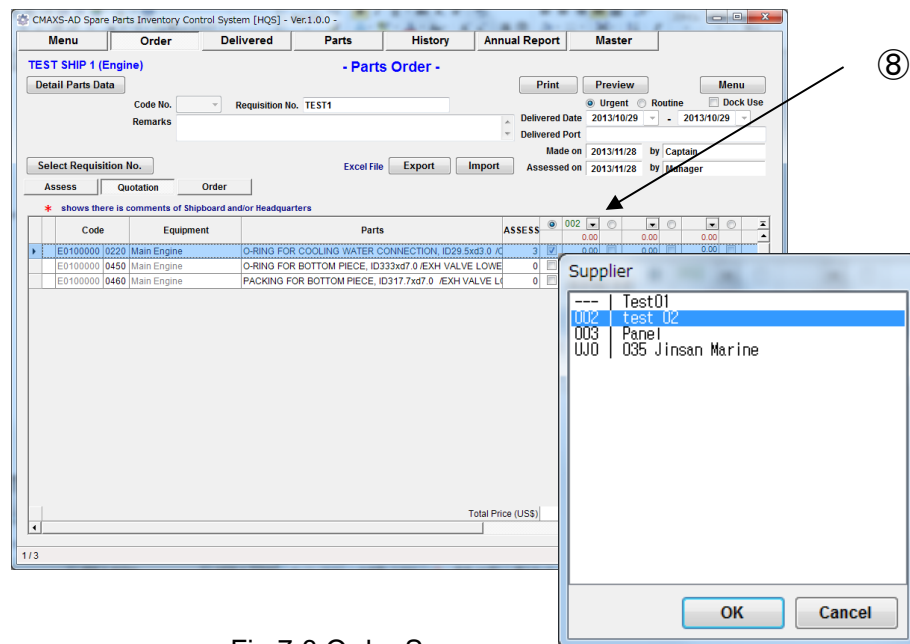


Fig.7-3 Order Screen

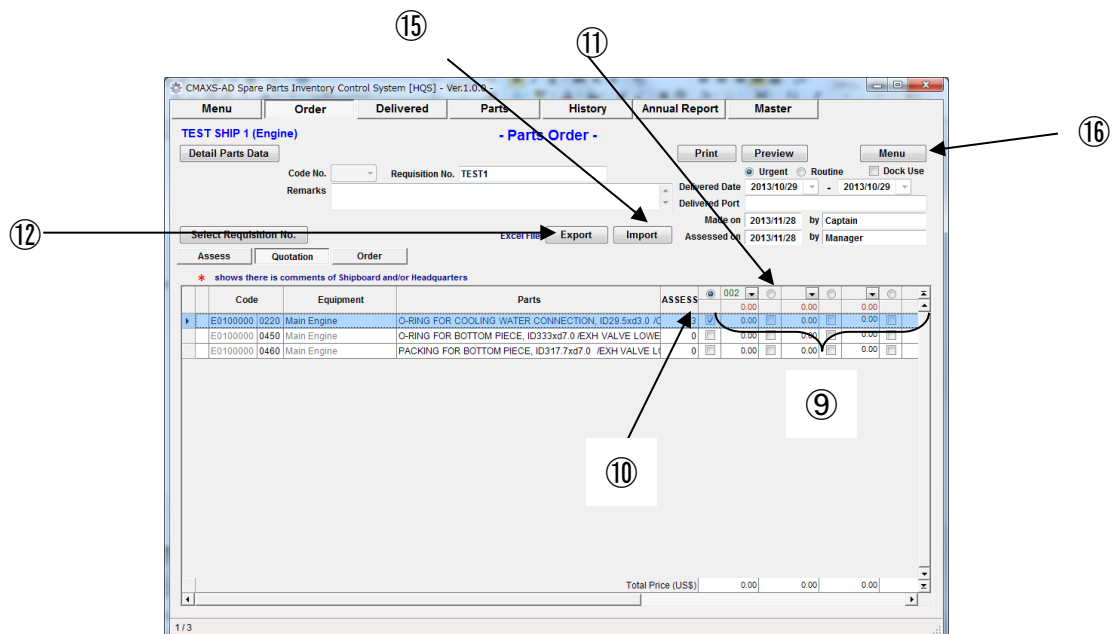


Fig.7-4 Order Screen

## 8. Make Order Sheet

- (1) On the "Menu Screen"(Fig.8-1), select [Make Order Sheet ].
- (2) "Order Screen" (Fig.8-2) is displayed.
- (3) If you want to make Order Sheet from other import data, select [Requisition No.]
- (4) If there is a comment from shipboard, [\*] is shown on left side potion. Then select it, "Requisition Comment Screen" is displayed and it can be changed.

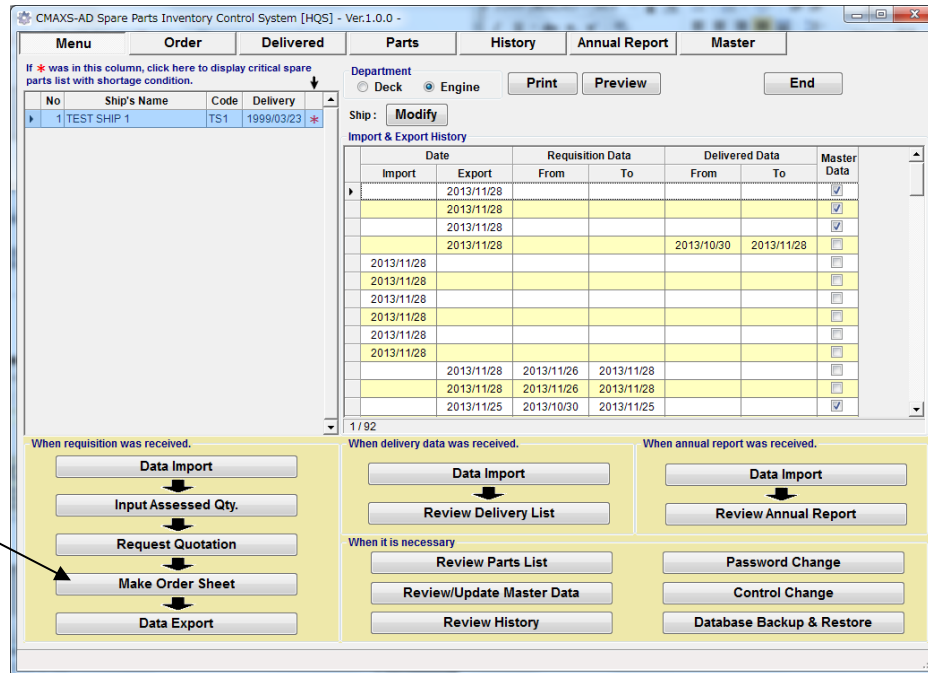


Fig.8-1 Menu Screen

- (5) If you want to see detail information of this item, select [Detail Parts Data].
- (6) If you want to print "Parts Requisition List", Select [Print] button.
- (7) If you want to see print preview, select [Preview]

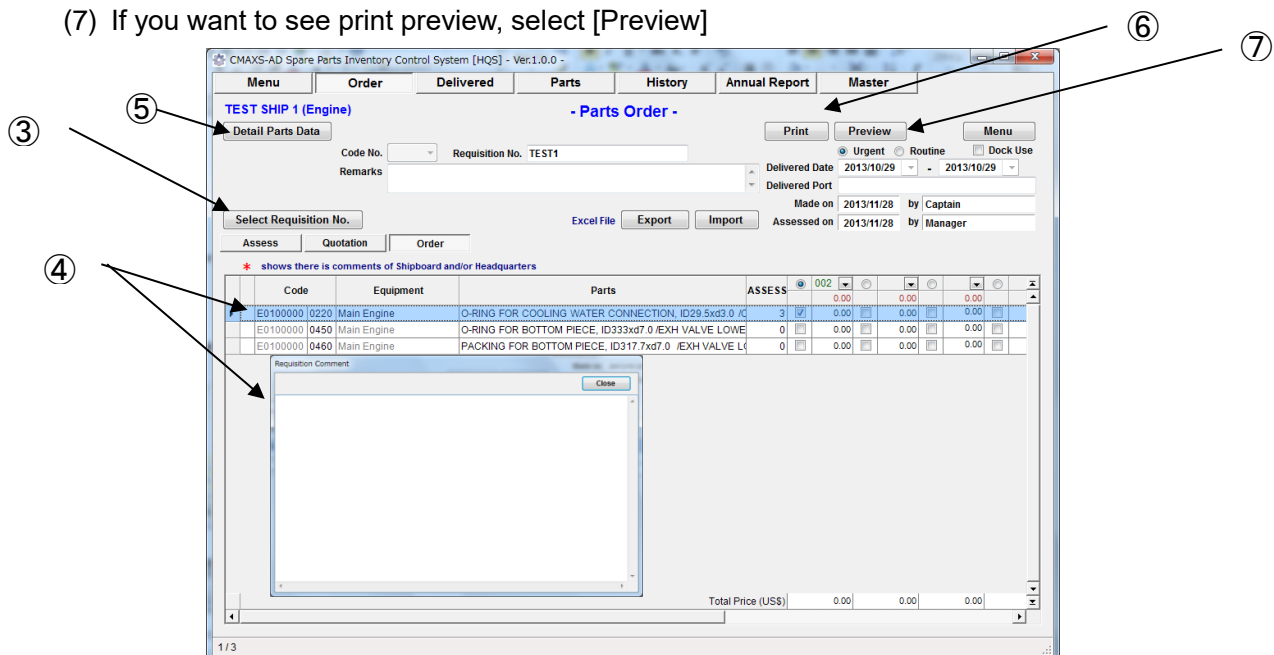


Fig.8-2 Order Screen

- (8) Click [▼], and select supplier from drop down list.
- (9) Supplier can be set maximum 10 suppliers.
- (10) After select supplier, put check mark only you need item for order sheet  
**( \*One supplier can be selected for each parts )** .
- (11) After select supplier, check [ ] option button to make order sheet by Excel.
- (12) Select [Export], then Save as dialog is displayed.
- (13) Select "OK" button, then order sheet can be made by Excel.
- (14) Send order sheet to supplier.
- (15) Select [Menu], then return to "Menu Screen"(Fig.8-1).
- (16) On the "Menu Screen"(Fig.8-1), select [Data Export] so as to send order sheet to shipboard.

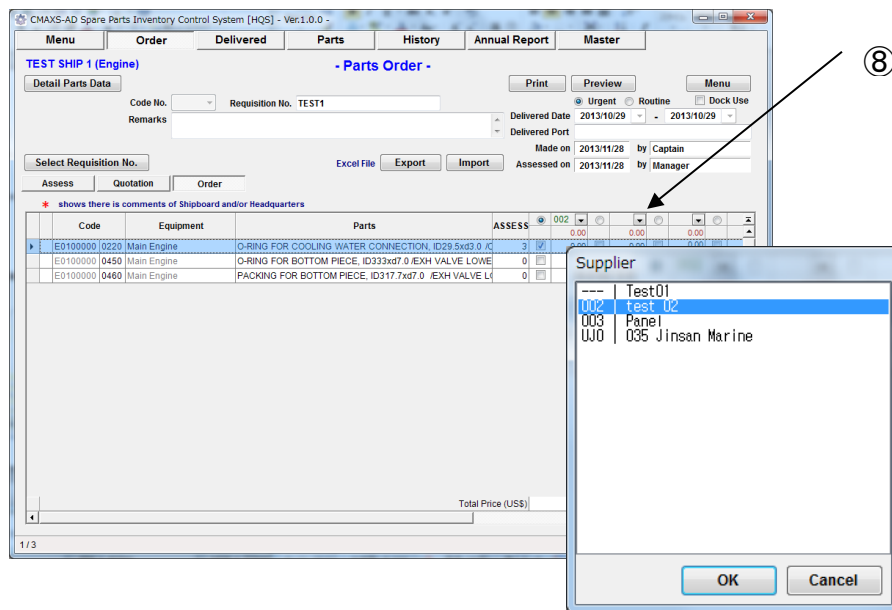


Fig.8-3 Order Screen

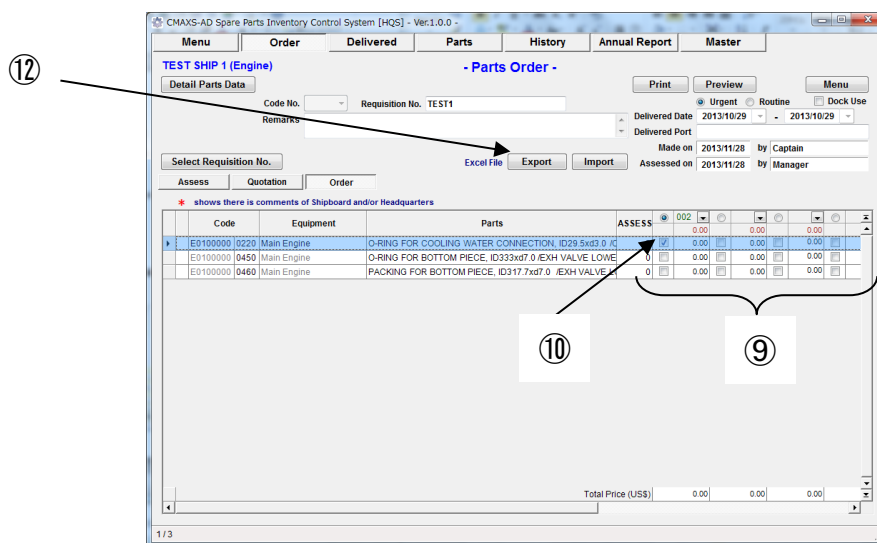


Fig.8-4 Order Screen

## 9. Review Delivered Parts

- (1) When you receive delivered parts data from shipboard  
On the "Menu Screen"(Fig.9-1), select [Data Import].
- (2) "Open Dialog"(Fig.9-2) is displayed. Select file for import. Then, select [Open].  
File name is decided by your company's standard.  
Standard file name of our system is shown for your reference.  
SPICS\_SBS\_aaa\_yymmdd-mmdd.zip  
aaa: Ship code  
yyymmdd-mmdd: Export period.
- (3) Confirm check mark is at left side of Delivery Data.
- (4) Select [OK] at Data Import dialog.
- (5) Import history is recorded on "Import & Export History".
- (6) On the "Menu Screen"(Fig.9-1), select [Review Delivery List].

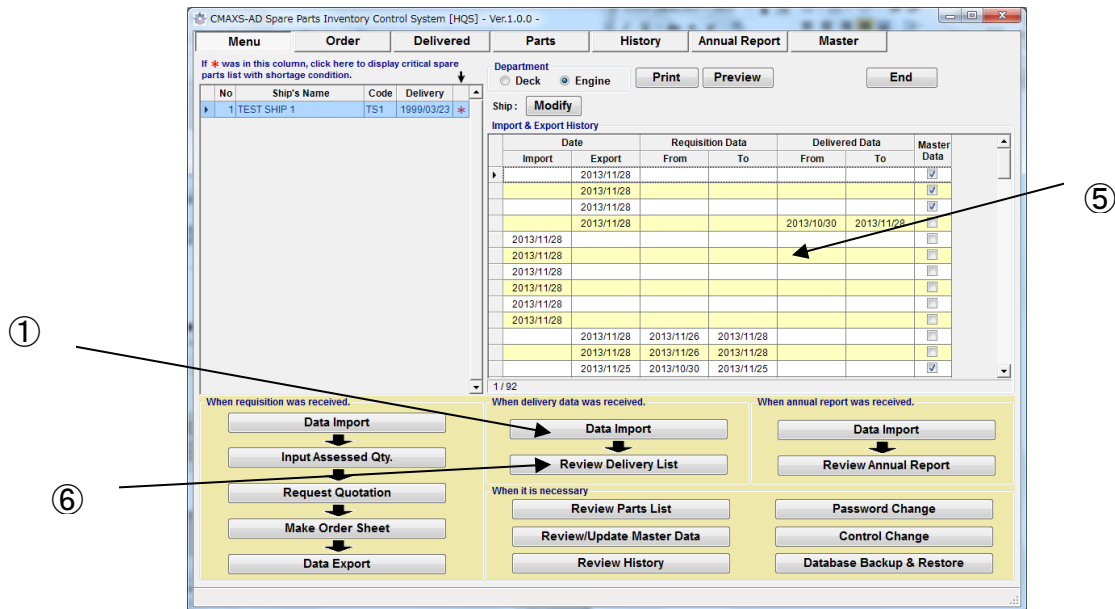


Fig.9-1 Menu Screen

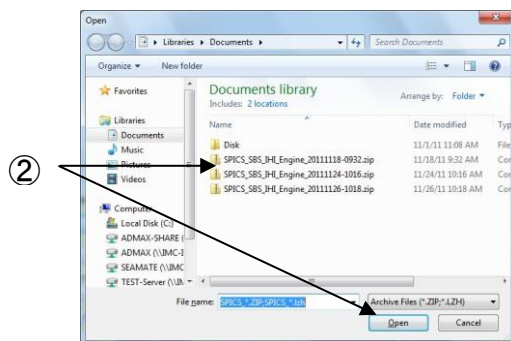


Fig.9-2 Open Dialog

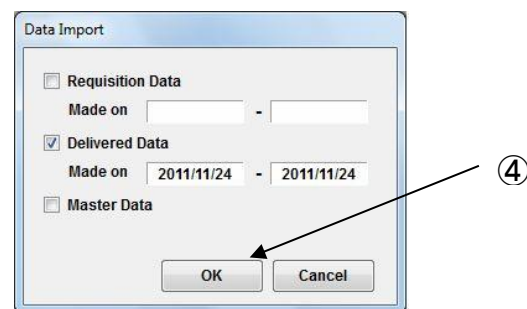


Fig.9-3 Data Import

- (7) "Delivered"(Fig.9-3) screen is displayed.
- (8) If you want to print delivered parts list, select [Print].
- (9) If you want to see print preview, select [Preview].
- (10) Select [Delivered Date].
- (11) "Delivered List Dialog "(Fig.9-4) is displayed.
- (12)If you want to print delivered day list, select [Print].
- (13) If you want to see print preview, select [Preview].
- (14) On the delivered date list, double-click or [OK] to review other delivered parts list.
- (15) Select [Close] to close "Delivered List" dialog, and return to "Delivered"(Fig.9-2) screen.  
Select [Menu]. Then, return to "Menu Screen".

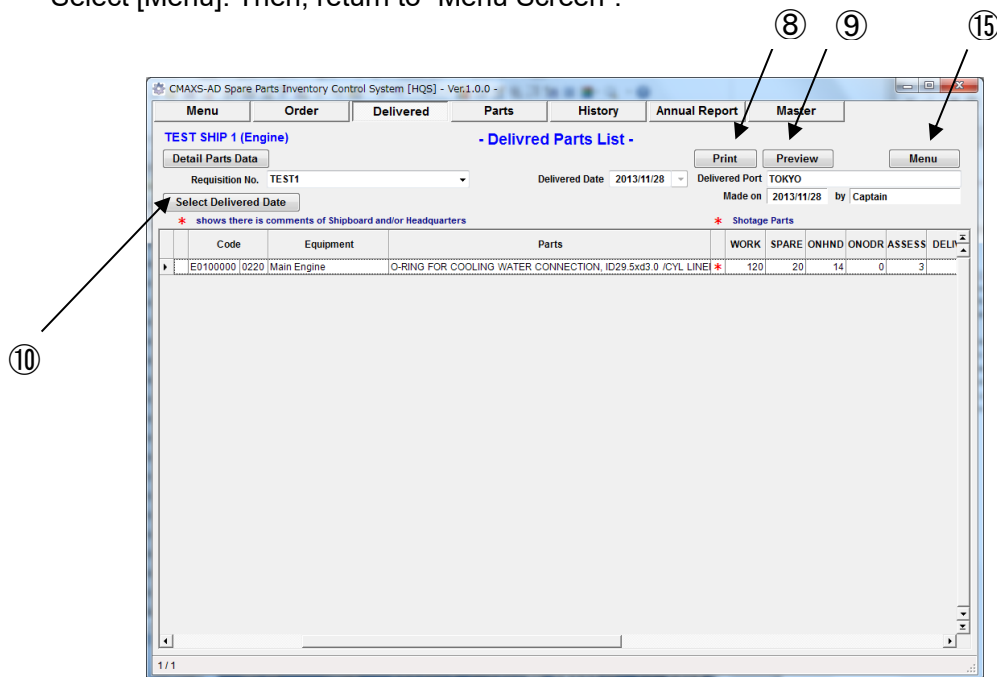


Fig.9-3 Delivered Parts List Screen

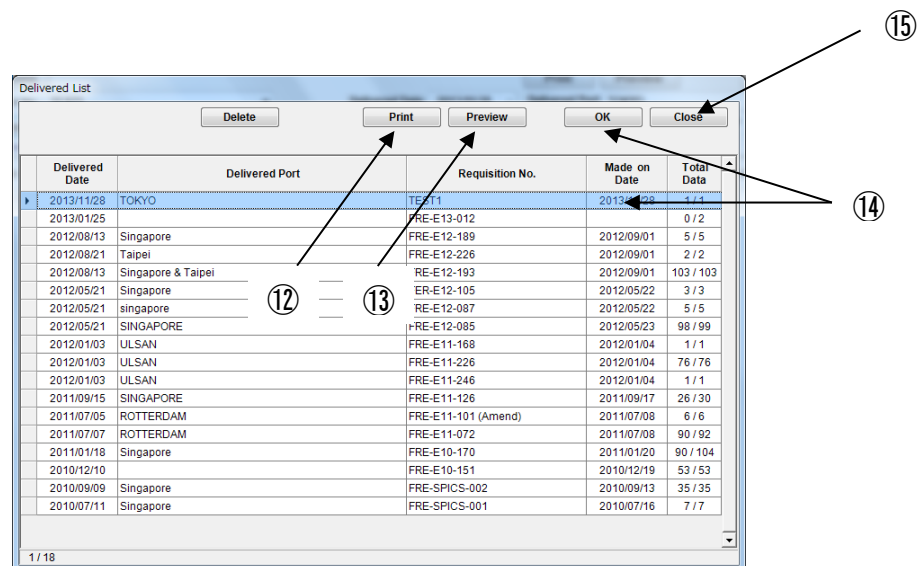


Fig.9-4 Delivered List Dialog

(16) On the “Delivered Parts List Screen”(Fig.9-5),

Select item and [Detail Parts Data].

(17) “Parts Screen ”(Fig.9-6) is displayed.

Confirm delivered parts item.

(18) If you want to print parts information, select [Print].

(19) If you want to see preview, select [Preview]

(20) Select [Close] to return to “Delivered Parts List Screen”(Fig.9-5).

(21) If there is a comment from shipboard, [\*] is shown on left side potion.

Click [\*],”Delivered Comment Screen”(Fig.9-7) is displayed and it cannot be changed.

(22) Select [\*x] to close “Parts Screen”.

(23) Select [Menu] to return to Menu Screen.

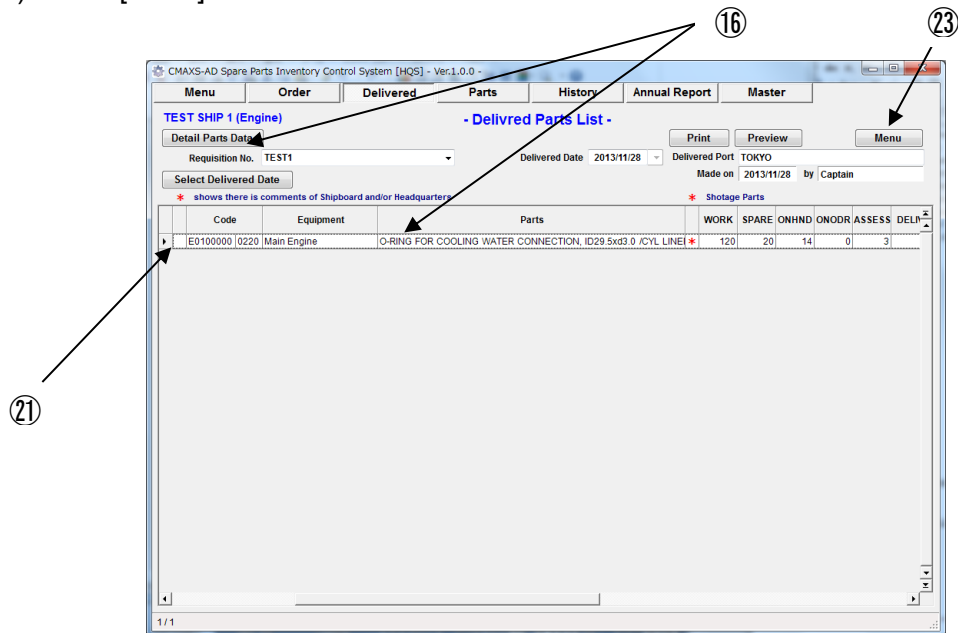


Fig.9-5 Delivered Parts List Screen

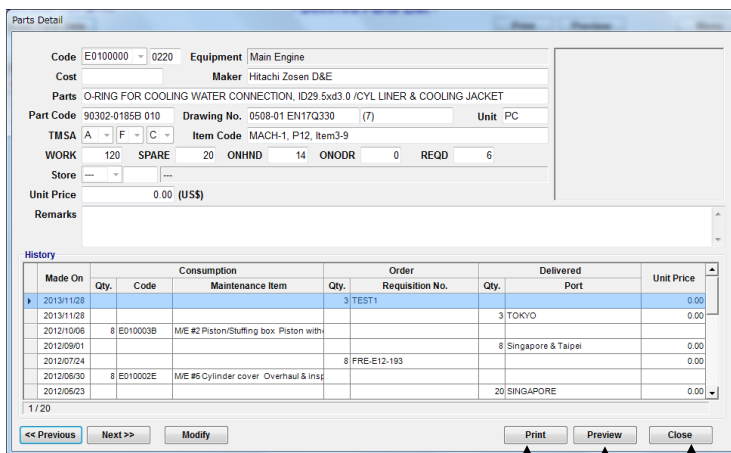


Fig.9-6 Parts Screen

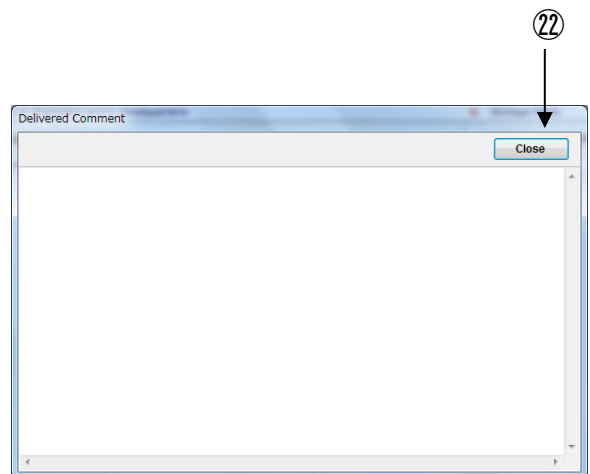


Fig.9-7 Delivered Comment Screen



## 10. Review Consumed / Ordered / Delivered Parts History

(1) On the "Menu Screen"(Fig.10-1), select [Review History].

(2) "History (Consumed Parts) Screen "(Fig.10-2) is displayed.

In this screen, all spare parts consumed in the last 12 months is displayed.

(3) Select [Period] button and "Period Setting Dialog"(Fig.10-3) is displayed.

(4) Input period or select from calendar by [▼] button to change period.

(5) Select [OK] button.

(6) All spare parts consumed in changed period is displayed again.

(7) "Code Search" function or "Filter" function can be used to find spare parts.

(Refer to Section 18.1 & 18.2)

(8) Select option button of [order].

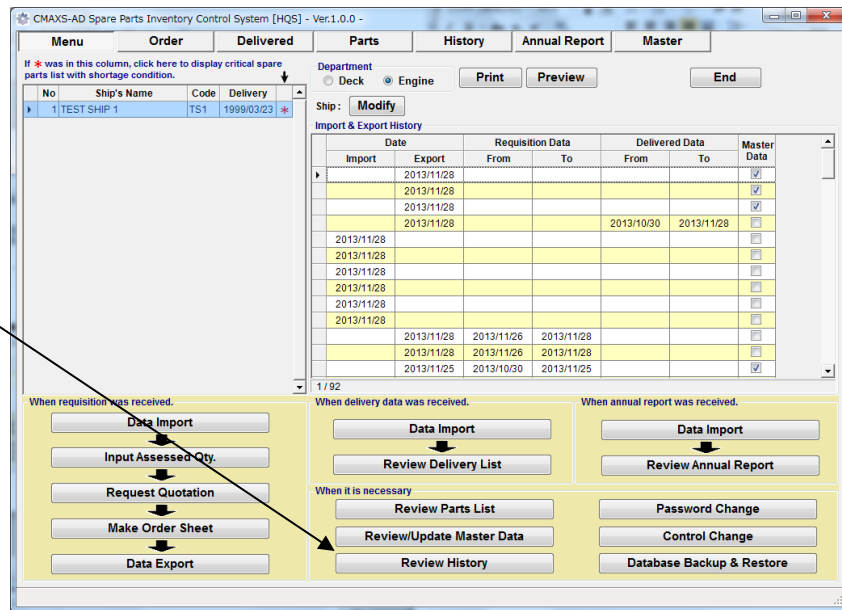


Fig.10-1 Menu Screen

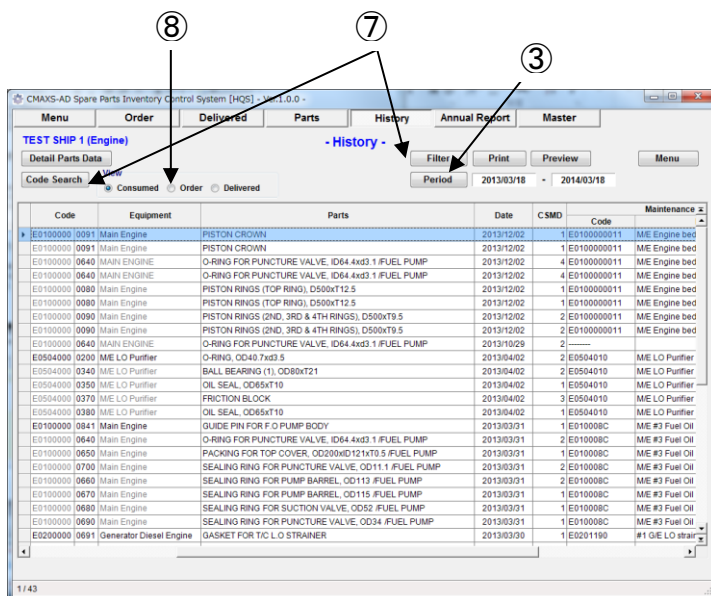


Fig.10-2 History[Consumed Parts] Screen

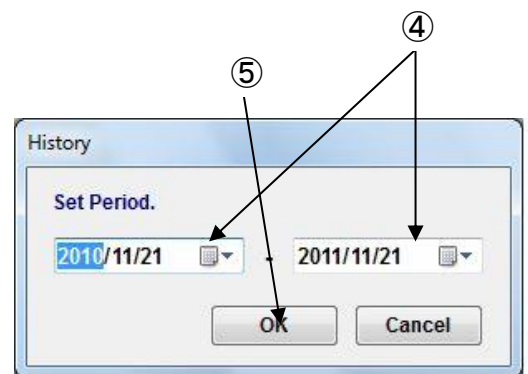


Fig.10-3 Period Setting Dialog Screen

(9) "History" (Ordered Parts)Screen"(Fig.10-4) is displayed.

In this screen, all spare parts ordered in the specified period is displayed.

(10) Select [Period] and "Period Setting Dialog"(Fig.10-5) is displayed.

(11) Input period or select from calendar by [▼] to change period.

(12) Select [OK].

(13) All spare parts ordered in changed period is displayed again.

(14) "Code Search" function or "Filter" function can be used to find spare parts.

(Refer to Section 18.1 & 18.2)

(15) Select [Delivered].

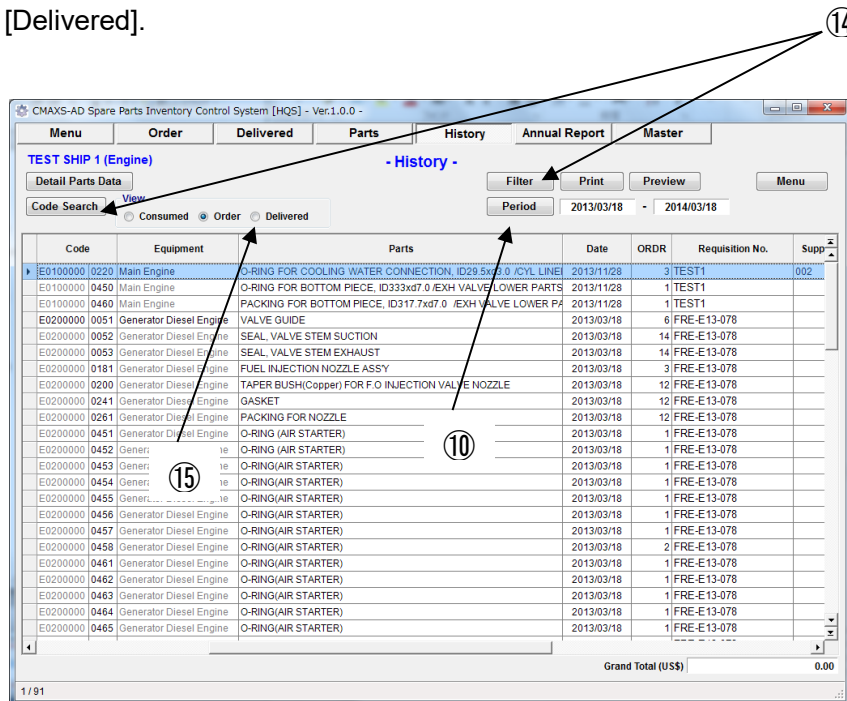


Fig.10-4 History [Order Parts] Screen

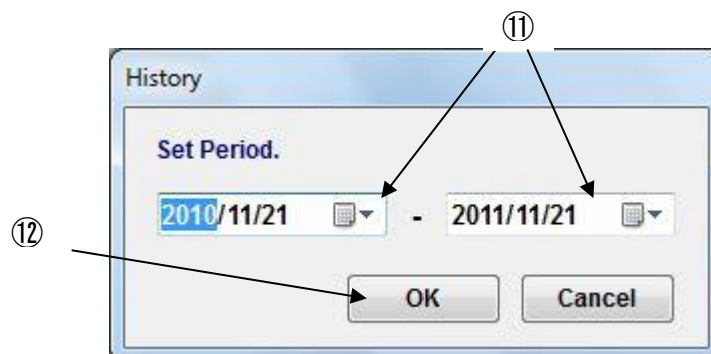


Fig.10-5 Period Setting Dialog

(16) "History (Delivered Parts) Screen"(Fig.10-6) is displayed.

In this screen, all spare parts delivered in the last 12 month are displayed.

(17) Select [Period] and "Period Setting Dialog" (Fig.10-7) is displayed.

(18) Input period or select from calendar by [▼] to change period.

(19) Select [OK].

(20) All spare parts delivered in changed period is displayed again.

(21) "Code Search" function or "Filter" function can be used to find spare parts.

(Refer to Section 18.1 & 18.2)

(22) Select [Menu] to return to "Menu Screen".

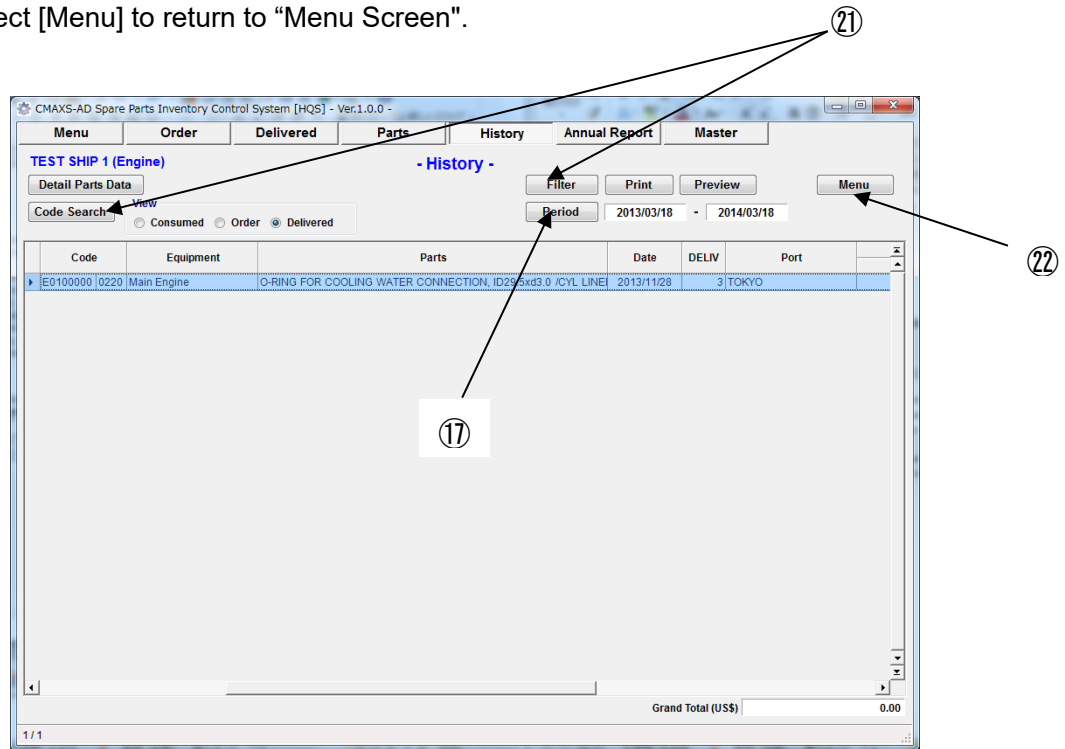


Fig.10-6 History [Delivered Parts] Screen

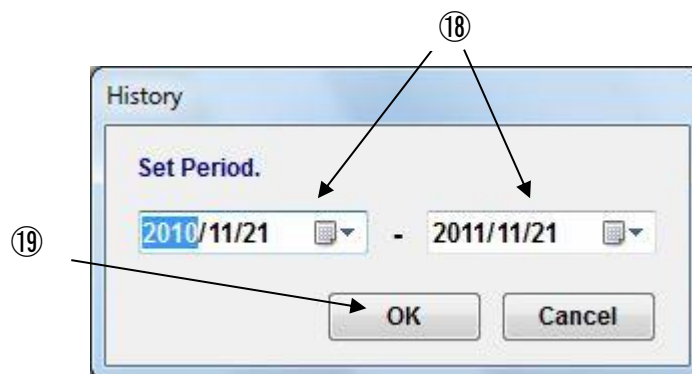


Fig.10-7 Period Setting Dialog

## 11. Review Annual Report

(1) On the "Menu Screen"(Fig.11-1), select [Data import].

Then, "Import Dialog"(Fig.11-2) is displayed.

Confirm check mark is at left side of Master Data.

(2) Select [OK] at completion message dialog.

(3) Import history is recorded on "Import & Export History".

(4) On the "Menu Screen" (Fig.11-1), select [Review Annual Report].

(5) "Annual Report Screen"(Fig.11-3) is displayed. In this screen, all spare parts registered in master database are shown.

(6) "Code Search" function or "Filter" function can be used to find spare parts.

(Refer to Section 18.1 & 18.2)

(7) Select [Print] to print out extracted spare parts list.

(8) If you want to see print preview, select [Preview].

(9) Select [Menu] to return to "Menu Screen".

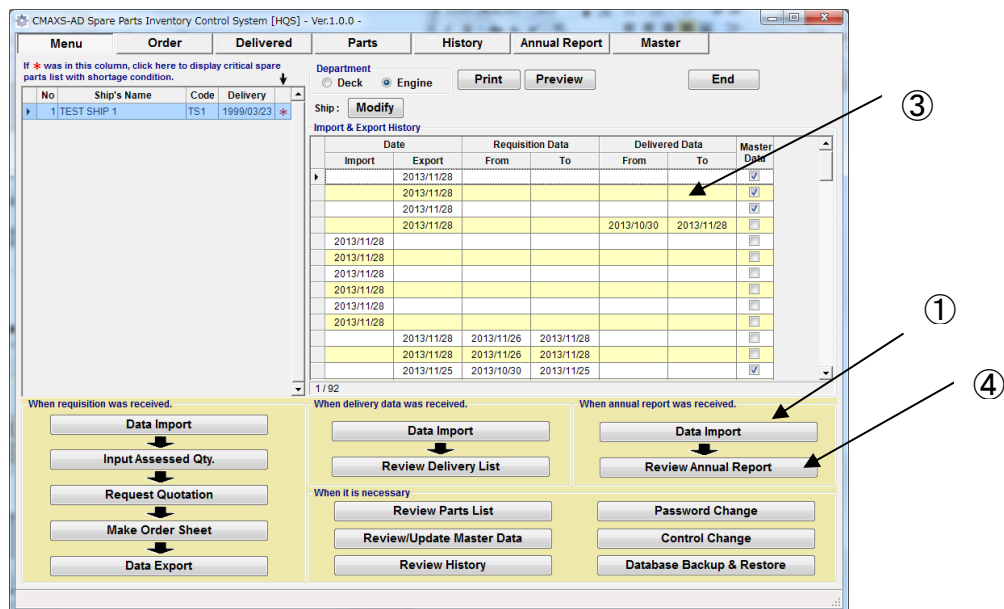


Fig.11-1 Menu Screen

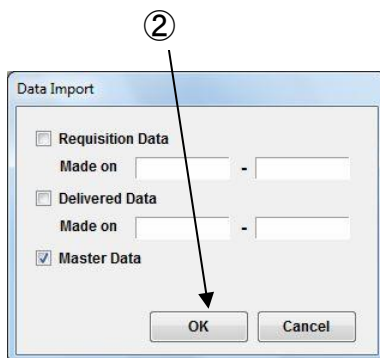


Fig.11-2 Import Dialog

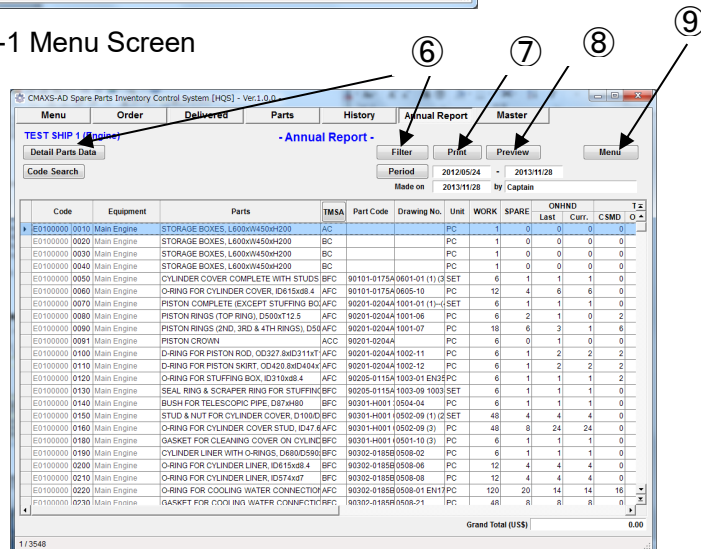


Fig.11-3 Annual Report Screen

(10) Select spare parts and Click [Detail Parts Data].

(11) "Parts Detail Dialog (Fig.11-4) is displayed.

And it cannot be modified the data at Headquarters.

(12) If you want to print "Parts Detail Dialog", select [Print].

(13) If you want to see preview, select [Preview].

(14) Select "Close" to close "Parts Detail Dialog"

(15) Select [Menu], then return to "Menu Screen".

CMAXS-AD Spare Parts Inventory Control System [HQS] - Ver.1.0.0 -

Menu Order Delivered Parts History Annual Report Master

TEST SHIP 1 (Engine) - Annual Report -

Filter Print Preview Menu

Period 2012/05/24 - 2013/11/28

Made on 2013/11/28 by Captain

Code	Equipment	Parts	TMSA	Part Code	Drawing No.	Unit	WORK	SPARE	ONHND	Last	Curr.	C SMD	T z
E0100000	0010 Main Engine	STORAGE BOXES, L600xW450xH200	AC			PC	1	0	0	0	0	0	
E0100000	0020 Main Engine	STORAGE BOXES, L600xW450xH200	BC			PC	1	0	0	0	0	0	
E0100000	0030 Main Engine	STORAGE BOXES, L600xW450xH200	BC			PC	1	0	0	0	0	0	
E0100000	0040 Main Engine	STORAGE BOXES, L600xW450xH200	BC			PC	1	0	0	0	0	0	
E0100000	0050 Main Engine	CYLINDER COVER COMPLETE WITH STUDS	BFC	90101-0175A 0601-01 (1)	(3)	SET	6	1	1	1	0	0	
E0100000	0060 Main Engine	O-RING FOR CYLINDER COVER, ID615x8.4	AFC	90101-0175A 0605-10		PC	12	4	6	6	0	0	
E0100000	0070 Main Engine	PISTON COMPLETE (EXCEPT STUFFING BOX)	AFC	90201-0204A 1001-01 (1)-(1)		SET	6	1	1	1	0	0	
E0100000	0080 Main Engine	PISTON RINGS (TOP RING), D500xT12.5	AFC	90201-0204A 1001-06		PC	6	2	1	0	2	0	
E0100000	0090 Main Engine	PISTON RINGS (2ND, 3RD & 4TH RINGS), D500xT12.5	AFC	90201-0204A 1001-07		PC	18	6	3	1	6	0	
E0100000	0091 Main Engine	PISTON CROWN	ACC	90201-0204A		PC	6	0	1	0	0	0	
E0100000	0100 Main Engine	D-RING FOR PISTON ROD, OD327.8xID311xT	AFC	90201-0204A 1002-11		PC	6	1	2	2	2	0	
E0100000	0110 Main Engine	D-RING FOR PISTON SKIRT, OD420.8xID404xT	AFC	90201-0204A 1002-12		PC	6	1	2	2	2	0	
E0100000	0120 Main Engine	O-RING FOR STUFFING BOX, ID310x8.4	AFC	90205-0115A 1003-01 EN35		PC	6	1	1	1	2	0	
E0100000	0130 Main Engine	SEAL RING & SCRAPER RING FOR STUFFING BOX	BFC	90205-0115A 1003-09 1003		SET	6	1	1	1	0	0	
E0100000	0140 Main Engine	BUSH FOR TELESCOPIC PIPE, D87xH80	BFC	90301-H001 0504-04		PC	6	1	1	1	0	0	
E0100000	0150 Main Engine	STUD & NUT FOR CYLINDER COVER, D100/D	BFC	90301-H001 0502-09 (1) (2)		SET	48	4	4	4	0	0	
E0100000	0160 Main Engine	O-RING FOR CYLINDER COVER STUD, ID47.6x	AFC	90301-H001 0502-09 (3)		PC	48	8	24	24	0	0	
E0100000	0180 Main Engine	GASKET FOR CLEANING COVER ON CYLINDER	BFC	90301-H001 0501-10 (3)		PC	6	1	1	1	0	0	
E0100000	0190 Main Engine	CYLINDER LINER WITH O-RINGS, D680/D590	BFC	90302-0185B 0508-02		PC	6	1	1	1	0	0	
E0100000	0200 Main Engine	O-RING FOR CYLINDER LINER, ID615x8.4	BFC	90302-0185B 0508-06		PC	12	4	4	4	0	0	
E0100000	0210 Main Engine	O-RING FOR CYLINDER LINER, ID574x8.7	BFC	90302-0185B 0508-08		PC	12	4	4	4	0	0	
E0100000	0220 Main Engine	O-RING FOR COOLING WATER CONNECTION	AFC	90302-0185B 0508-01 EN17		PC	120	20	14	14	16	0	
E0100000	0230 Main Engine	GASKET FOR COOLING WATER CONNECTION	BFC	90302-0185B 0508-21		PC	48	8	8	8	0	0	
Grand Total (US\$)													0.00

1 / 3548

Fig.11-4 Annual Report Screen

Parts Detail

Code E0100000 0160 Equipment Main Engine

Cost

Maker Hitachi Zosen D&E

Parts O-RING FOR CYLINDER COVER STUD, ID47.6x8.7

Part Code 90301-H001 088, H0 Drawing No. 0502-09 (3) Unit PC

TMSA A F C Item Code MACH-1, P11, Item3-3-1

WORK 48 SPARE 8 ONHND 24 ONODR 0 REQD 0

Store

Unit Price 0.00 (US\$)

Remarks

History

Made On	Qty.	Code	Maintenance Item	Qty.	Requisition No.	Qty.	Port	Unit Price
2011/01/20						0	Singapore	0.00
2010/12/19						8		0.00
2010/11/21					20 FRE-E10-170			0.00
2010/10/29					8 FRE-E10-151			0.00

1 / 4

<< Previous Next >> Modify Print Preview Close

Page Scroll

Fig.11-5 Parts Detail Dialog

(12)

(13)

(14)

## 12. Review & Update Spare Parts Data

- (1) On the “Menu Screen”(Fig.12-1), select [Review Parts List].
- (2) “Parts List Screen”(Fig.12-2) is displayed. In this screen, all spare parts consumed in the last 12 months is displayed.
- (3) Select item and click [Detail Parts Data], “Parts Dialog” (Fig.12-3) is displayed.
- (4) If you want to modify, only SMS category can be changed.
- (5) If you want to print, select [Print].
- (6) If you want to see preview, select [Preview].
- (7) If you want to close screen, select [Close].
- (8) Select operation button of [shortage].

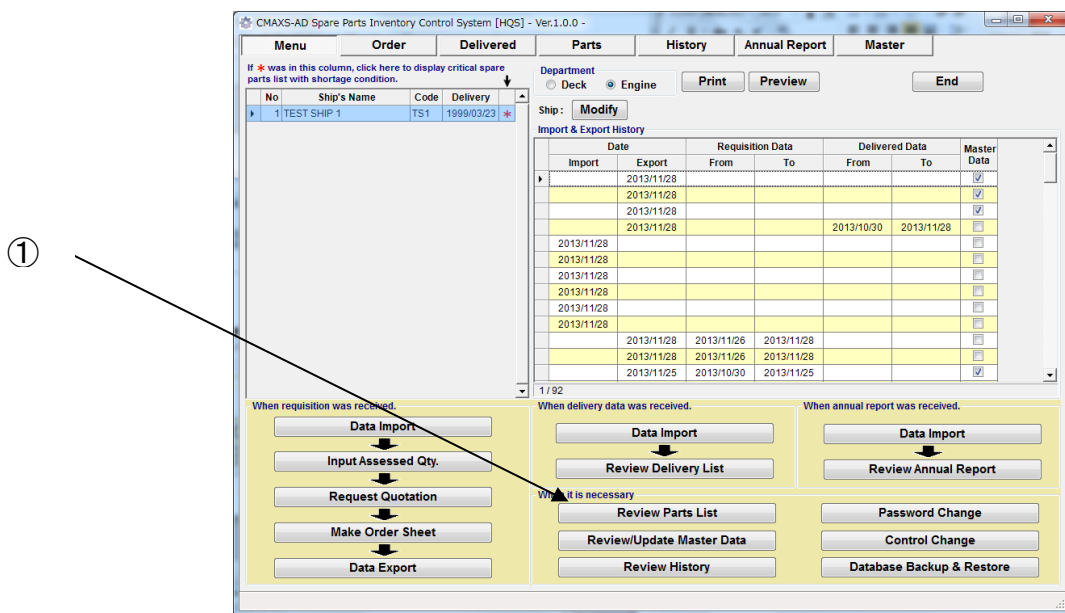


Fig.12-1 Menu Screen

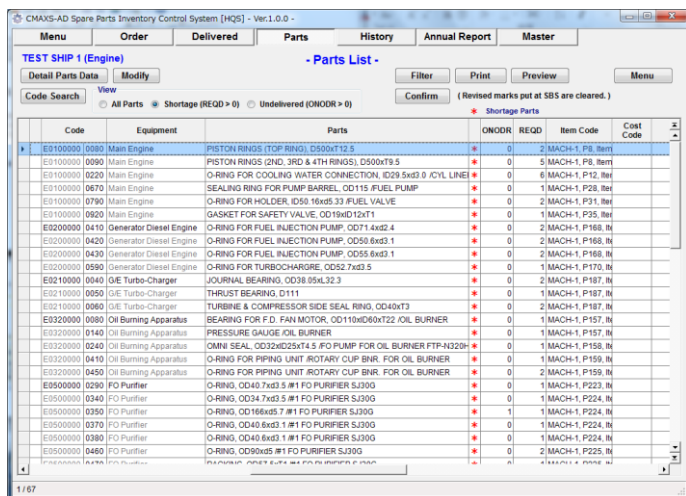


Fig.12-2 Parts List Screen

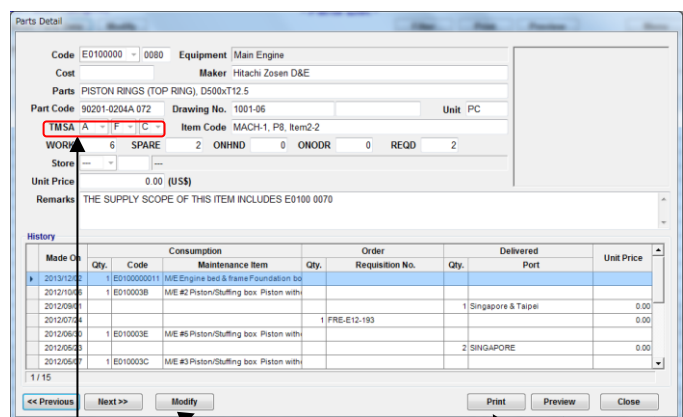


Fig.12-3 Parts Dialog



(9) "Parts (Shortage) Screen"(Fig.12-4) is displayed.

In this screen, all spare parts with shortage condition is displayed.

(10) Select item and [Detail Parts Data], "Parts Dialog"(Fig.12-5) is displayed.

(11) If you want to modify, select [Modify], only SMS category can be changed.

(12) If you want to print, select [Print].

(13) If you want to see preview, select [Preview].

(14) If you want to close a screen, select [Close].

(15) "Code Search" function or "Filter" function can be used to find spare parts.

(Refer to Section 18.1 & 18.2)

(16) Select operation button of [Undelivered].

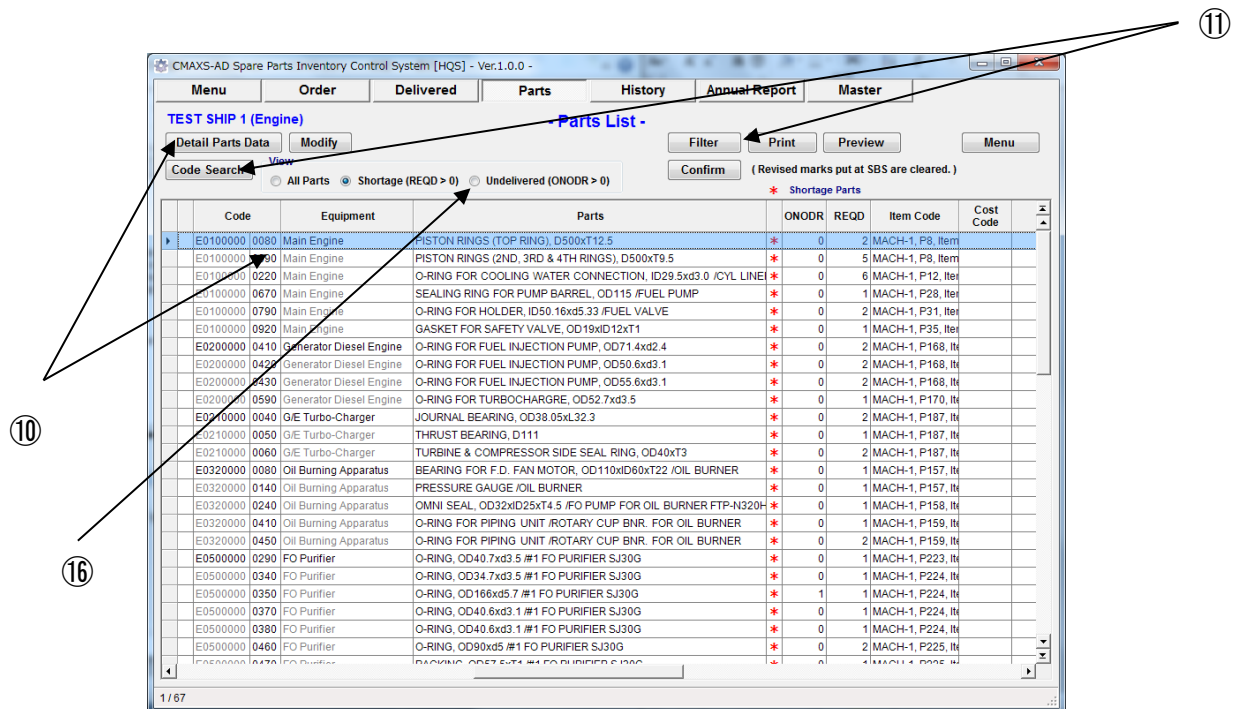


Fig.12-4 Parts List (Shortage) Screen

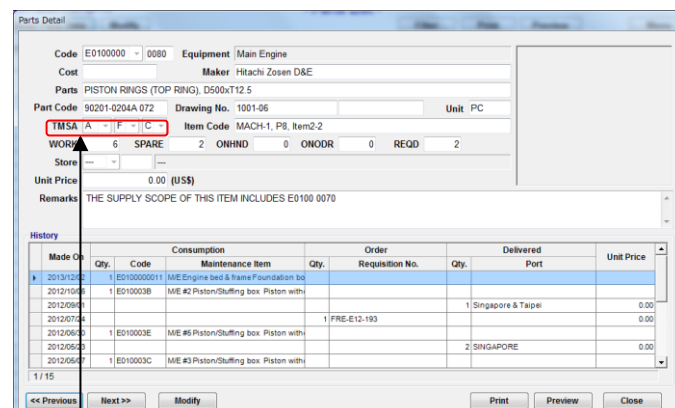


Fig.12-5 Parts Dialog

(18) "Parts (delivered Parts) Screen"(Fig.12-6) is displayed.

In this screen, all spare parts undelivered is displayed.

(19) Select item and [detail], Parts Dialog(Fig.12-7) is displayed.

(20) If you want to modify, select [Modify], only SMS category can be changed.

(21) If you want to print, Select [Print] Button.

(22) If you want to see preview, select [Preview].

(23) If you want to close a screen, Select [Close].

(24) "Code Search" function or "Filter" function can be used to find spare parts.

(Refer to Section 18.1 & 18.2)

(25) Select [Menu]. "Menu" Screen" is displayed.

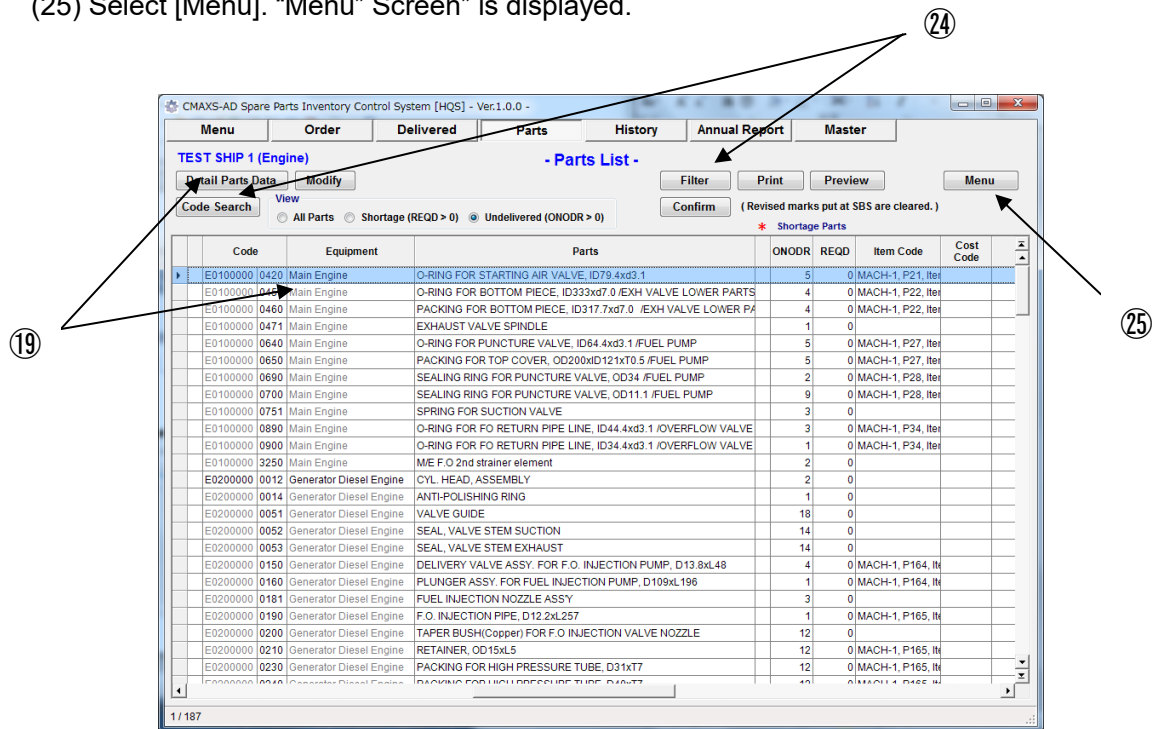


Fig.12-6 Parts List (Delivered Parts) Screen

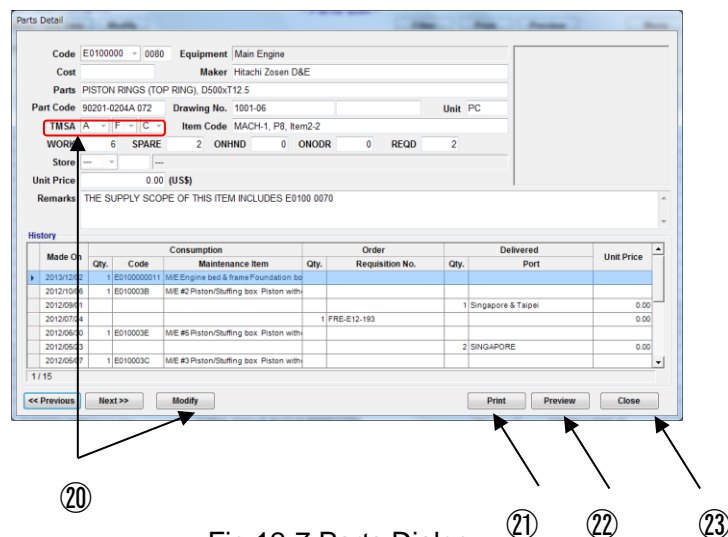


Fig.12-7 Parts Dialog



### 13.Review Master Data (Equipment)

- (1) On the “Menu Screen”(Fig.13-1), select [Review / Update Master Data].  
Then, “Master[Equipments] Screen”(Fig.13-2) is displayed. In this screen, all equipments registered in master database are shown.
- (2) Select item and “Detail Master Data” button, then “Master Dialog”(Fig.13-3) is displayed.
- (3) It is not possible to modify the data.
- (4) Select [Close] to return to “Master [Equipments] Screen”.

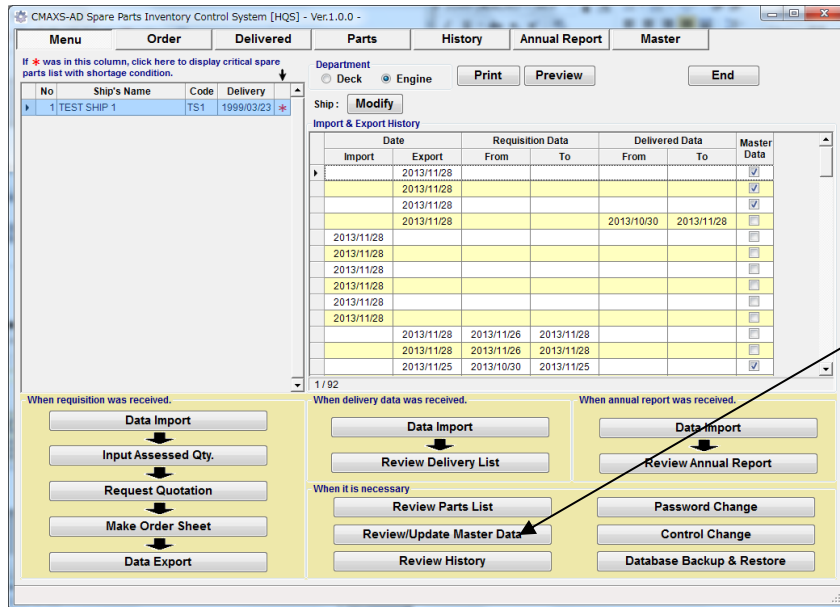


Fig.13-1 Menu Screen

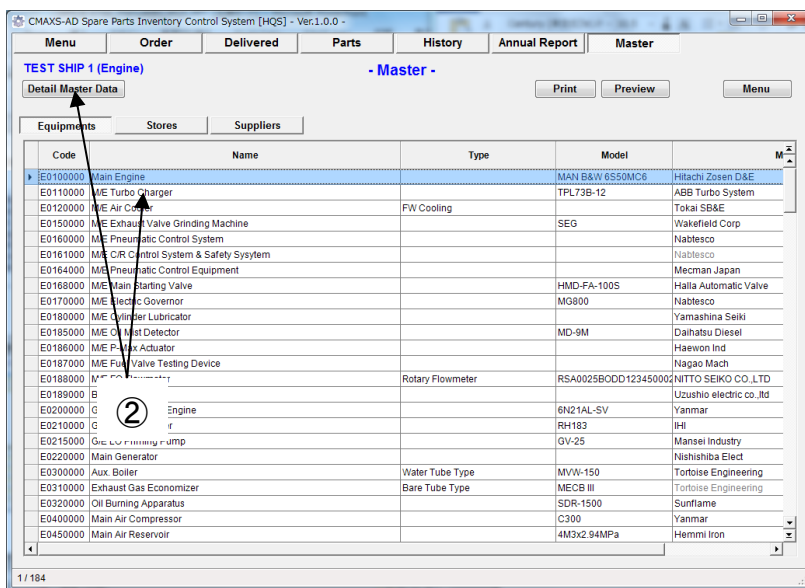


Fig.13-2 Master [Equipments] Screen

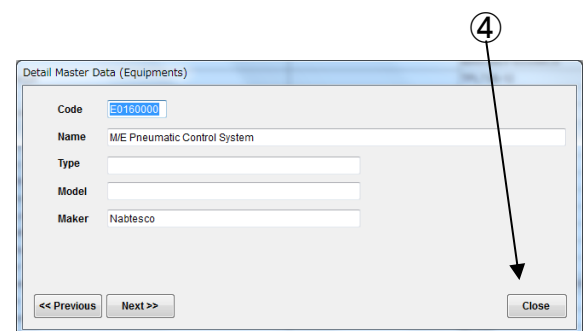


Fig.13-3 Detail Master Data Screen

## 14. Review Master Data (Store)

- (1) On the “Menu Screen”(Fig.13-1), select [Review/Update Master Data].
- (2) “Master [Equipments] Screen”(Fig.13-2) is displayed and select [Stores].
- (3) “Master [Stores] Screen”(Fig.13-3) is displayed. In this screen, all stores registered in master database are shown.

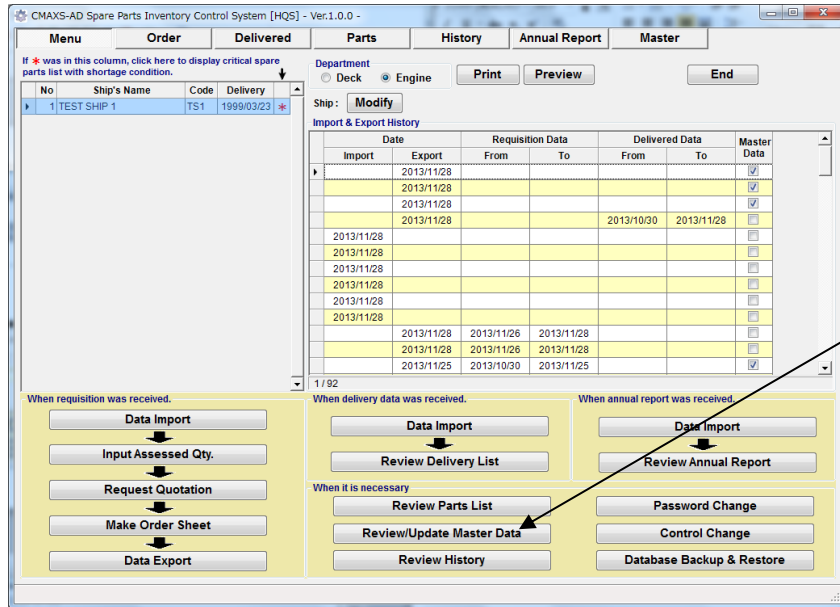


Fig.14-1 Menu Screen

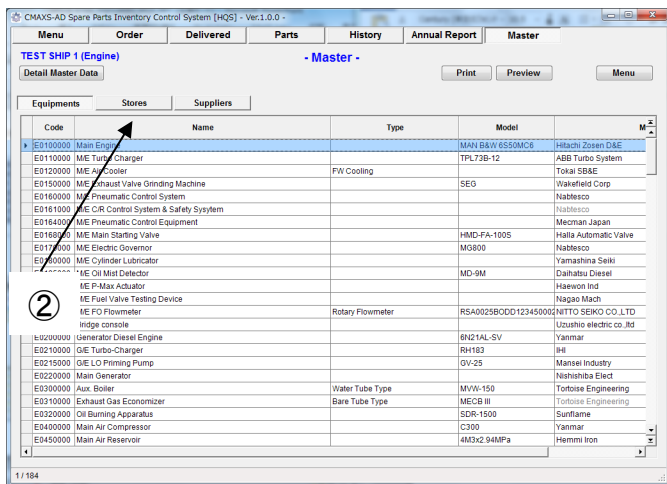


Fig.14-2 Master [Equipments] Screen

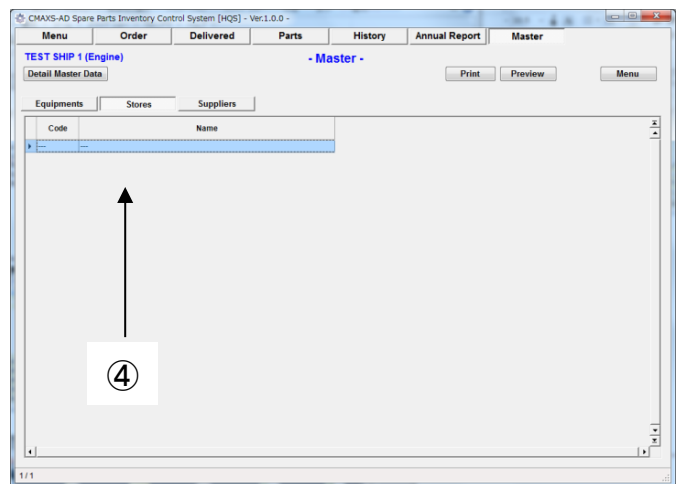


Fig.14-3 Master [Stores] Screen

- (4) It is not possible to modify the data.
- (5) Click on the item, then “Detail Master Data” Screen (Fig.14-4) is displayed.
- (6) Select [Close] to return to “Menu Screen”

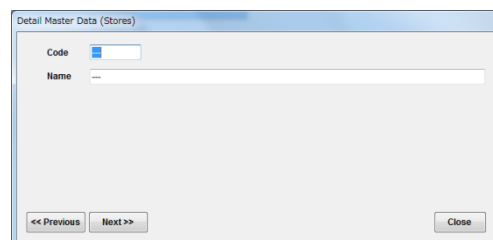


Fig.14-4 Detail Master Data Screen

## 15. Review & Update Master Data (Suppliers)

(1) On the “Menu Screen”(Fig.15-1), select [Review / Update Master Data].

(2) “Master [Equipments] Screen”(Fig.15-2) is displayed.

Select [Suppliers], “Suppliers List Screen”(Fig.15-3) is displayed.

In this screen, all stores registered in master database are shown.

CMAXS-AD Spare Parts Inventory Control System [HQS] - Ver.1.0.0 -

Menu Order Delivered Parts History Annual Report Master

If \* was in this column, click here to display critical spare parts list with shortage condition.

No. Ship's Name Code Delivery

1 TEST SHIP 1 TS1 1999/03/23 \*

Department: Deck Engine

Ship: Modify

Print Preview End

Import & Export History

Date	Requisition Data	Delivered Data	Master Data
Import	Export	From	To
2013/11/28			
2013/11/28			
2013/11/28			
2013/11/28			
2013/11/28		2013/10/30	2013/11/28
2013/11/28			
2013/11/28			
2013/11/28			
2013/11/28			
2013/11/28			
2013/11/28	2013/11/26	2013/11/28	
2013/11/28	2013/11/26	2013/11/28	
2013/11/25	2013/10/30	2013/11/25	

1 / 92

When requisition was received.

Data Import

Input Assessed Qty.

Request Quotation

Make Order Sheet

Data Export

When delivery data was received.

Data Import

Review Delivery List

When it is necessary

Review Parts List

Review/Update Master Data

Review History

When annual report was received.

Data Import

Review Annual Report

Password Change

Control Change

Database Backup & Restore

Fig.15-1 Menu Screen

CMAXS-AD Spare Parts Inventory Control System [HQS] - Ver.1.0.0 -

Menu Order Delivered Parts History Annual Report Master

TEST SHIP 1 (Engine)

Detail Master Data

Equipments Stores Suppliers

Code	Type	Model	Manufacturer
E0100000	Main Engine	MAN B&W 6S50MC6	Ishibashi Zosen DAE
E0110000	IME Turbo Charger	TPL73B-12	ABB Turbo System
E0120000	IME Air Cooler		Tokai SBAE
E0150000	IME Exhaust Valve Grinding Machine	SEG	Wakafeld Corp
E0160000	IME Pneumatic Control System		Nabtesco
E0161000	IME Control System & Safety System		Nabtesco
E0164000	IME Pneumatic Control Equipment		Mechman Japan
E0168000	IME Main Starting Valve	HMD-FA-100S	Halla Automatic Valve
E0170000	IME Electric Governor	M3800	Nabtesco
E0175000	IME Cylinder Lubricator		Yamashina Seiki
E0176000	IME Oil Mist Detector	MD-9M	Daihatsu Diesel
E0177000	IME Fuel Valve		Nagao Mach
E0178000	IME Fuel Valve Testing Device		Nagao Mach
E0179000	IME Fuel Valve		Nagao Mach
E0180000	IME Fuel Valve		Nagao Mach
E0181000	IME Fuel Valve		Nagao Mach
E0182000	IME Fuel Valve		Nagao Mach
E0183000	IME Fuel Valve		Nagao Mach
E0184000	IME Fuel Valve		Nagao Mach
E0185000	IME Fuel Valve		Nagao Mach
E0186000	IME Fuel Valve		Nagao Mach
E0187000	IME Fuel Valve		Nagao Mach
E0188000	IME Fuel Valve		Nagao Mach
E0189000	IME Fuel Valve		Nagao Mach
E0190000	IME Fuel Valve		Nagao Mach
E0191000	IME Fuel Valve		Nagao Mach
E0192000	IME Fuel Valve		Nagao Mach
E0193000	IME Fuel Valve		Nagao Mach
E0194000	IME Fuel Valve		Nagao Mach
E0195000	IME Fuel Valve		Nagao Mach
E0196000	IME Fuel Valve		Nagao Mach
E0197000	IME Fuel Valve		Nagao Mach
E0198000	IME Fuel Valve		Nagao Mach
E0199000	IME Fuel Valve		Nagao Mach
E0200000	Generator Diesel Engine	6N21AL-SV	Yanmar
E0210000	D/E Turbo-Charger	RH163	IHI
E0215000	D/E LO Priming Pump	GV-25	Mansel Industry
E0220000	Main Generator		Nishishiba Elect
E0230000	Aux. Boiler	Water Tube Type	MVW-150
E0240000	Exhaust Gas Economizer	Bare Tube Type	MECB III
E0250000	Oil Burning Apparatus		SDR-1500
E0400000	Main Air Compressor		C300
E0450000	Main Air Reservoir		4M3x2 94MPa

1 / 184

Fig.15-2 Master [Equipments] Screen

(3) If you want to modify data of suppliers.

On the “Suppliers List Screen”(Fig.15-3), Select item and [Modify], then “Suppliers Dialog” (Modify version ) (Fig.15-4) is displayed.

If you want to modify existent suppliers data, it can be modified.

(4) Save or cancel modified data.

(5) If you want to “Append” data of suppliers.

On the top row of “Suppliers List Screen”(Fig.15-3), select row and “Append” button, then Suppliers Dialog (Append version)(Fig.15-5) is displayed.

If you want to append new suppliers data, it can be appended.

(6) Save or cancel appended data.

(7) If you want to delete item, select [Delete]

(8) If you want to print list, select [Print].

(9) If you want to see print preview, select [Preview]

(10) Select [Menu], then return to “Menu Screen”.

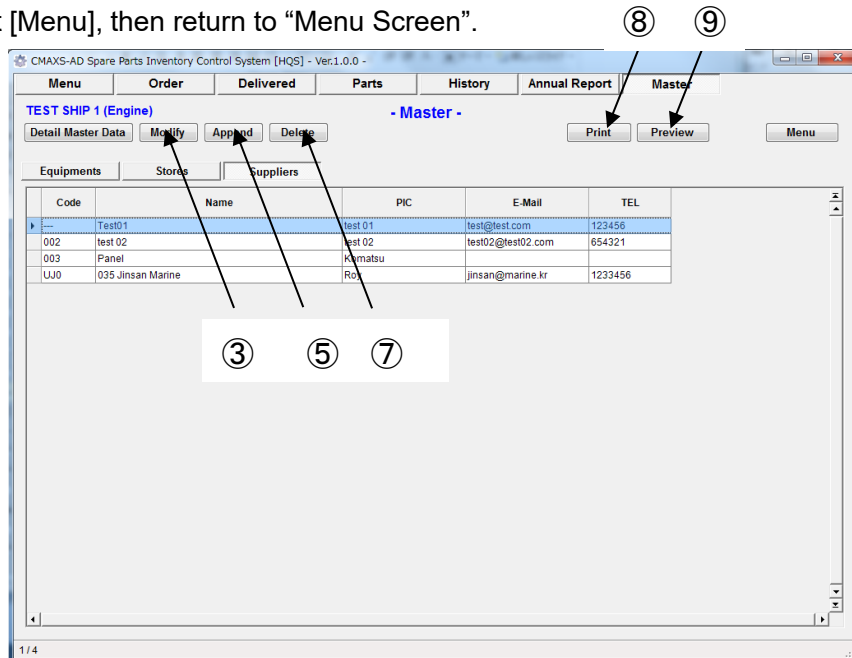


Fig.15-3 Master [Suppliers] Screen

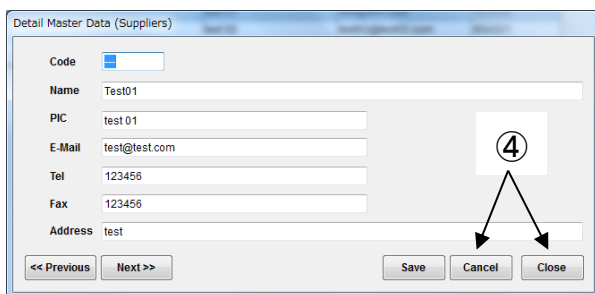


Fig.15-4 Detail Master Data Screen (Modify)

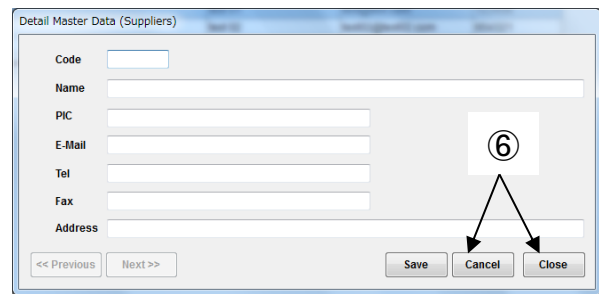


Fig.15-6 Detail Master Data Screen (Append)

## 16. Setting of User Authority and Password

"User Authority and Password" can be set for each user.

Management of password only can be performed by the user who has administrator authority.

Other users can't select

[Password Change].

(1) Select [Password Change] on the "Menu Screen" (Fig.16-1).

"Password Control Dialog"(Fig.16-2) is displayed.

(2) Select [Modify].

(3) Change "Password", "Name" and "Authority".

"Password" shall be less than 20 characters. And, "Name"

shall be less than 40 characters.

Max.100 items can be registered.

(4) If you want to save data, select [Save]. If you want to cancel data, select [Cancel].

(5) If you want to close, select [Close] .

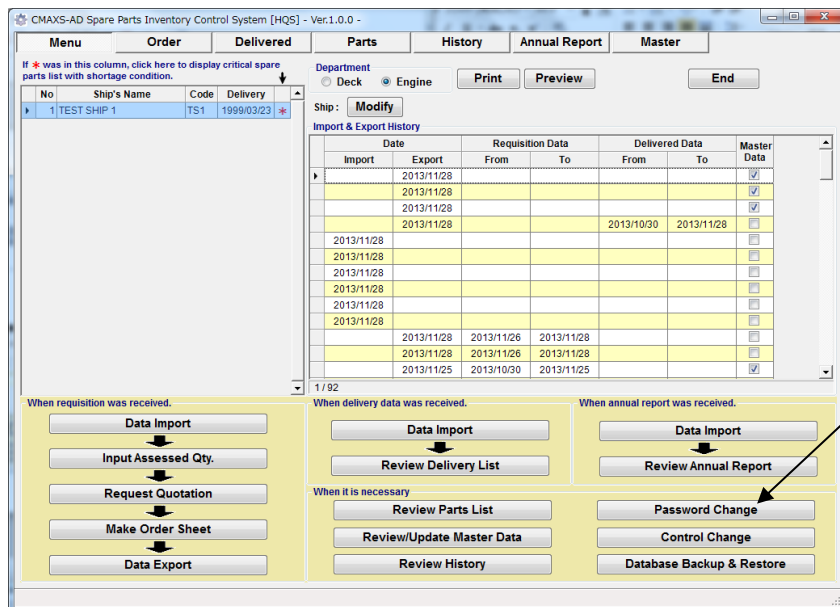


Fig.16-1 Menu Screen

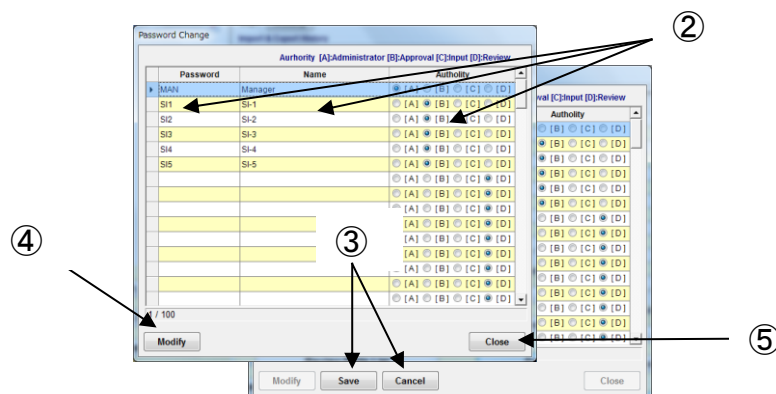


Fig.16-2 Password Change Dialog

## 17. Setting of Controls

"Various Controls" can be set by the user who has administrator or approve authority. Other users can't select [Control Change].

(1) Select [Control Change] button on the "Menu Screen" (Fig.17-1).

"Controls Dialog"(Fig.17-2) is displayed.

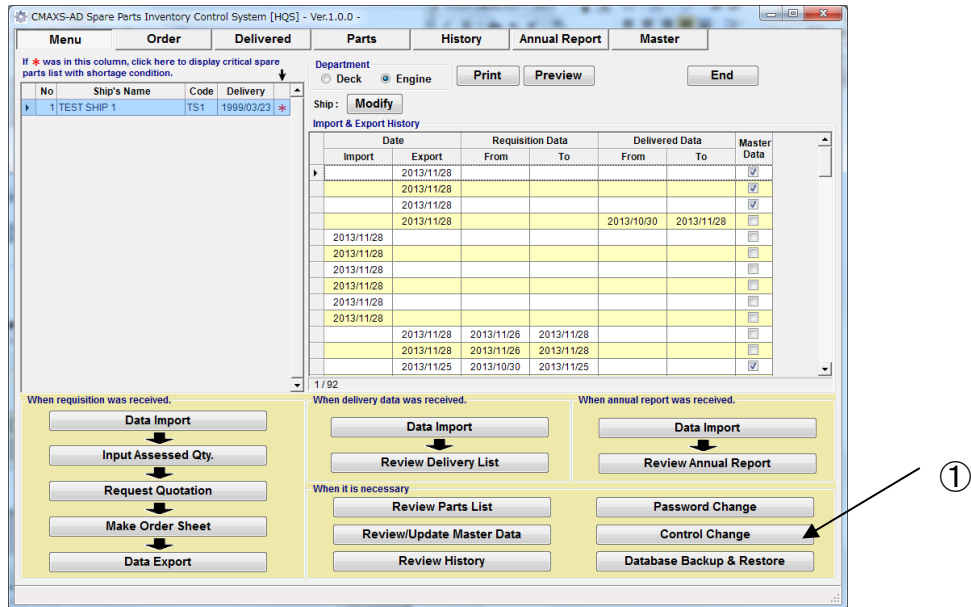


Fig.17-1 Menu Screen

2. Select various setting for the following controls.

- Guidance View
- Date Format
- Sort Type
- Bar Code Print
- Category Title
- Currency

3. If you want to close, select [OK].

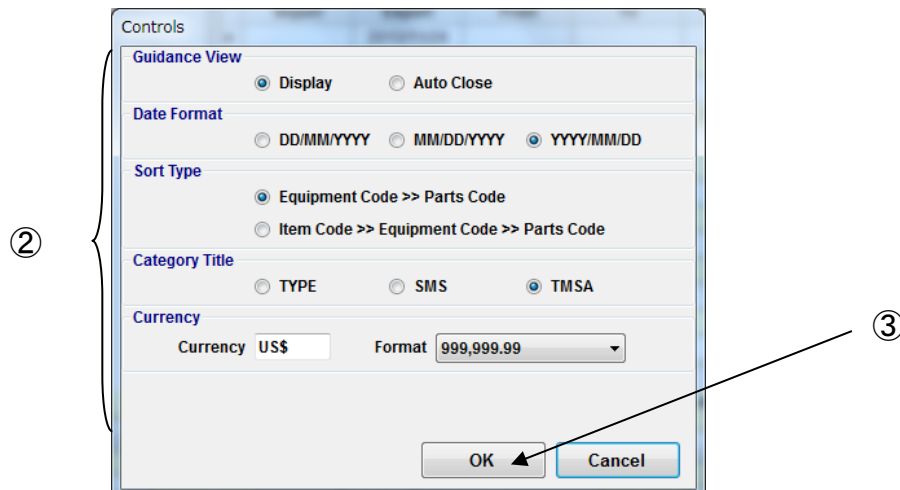


Fig.17-2 Controls Dialog

## 18. Common Utility Functions

### 18.1 Code Search Function

On the "Parts List Screen", "History Screen" and "Annual Report Screen", [Code Search] function can be used for searching objective spare parts easily.

- (1) Select [Code Search] on the "Parts List Screen" (Fig.18-1).
- (2) Select [+] mark of equipment and spare parts data. Then, select [OK].
- (3) Selected spare parts are displayed on top row of this Screen.

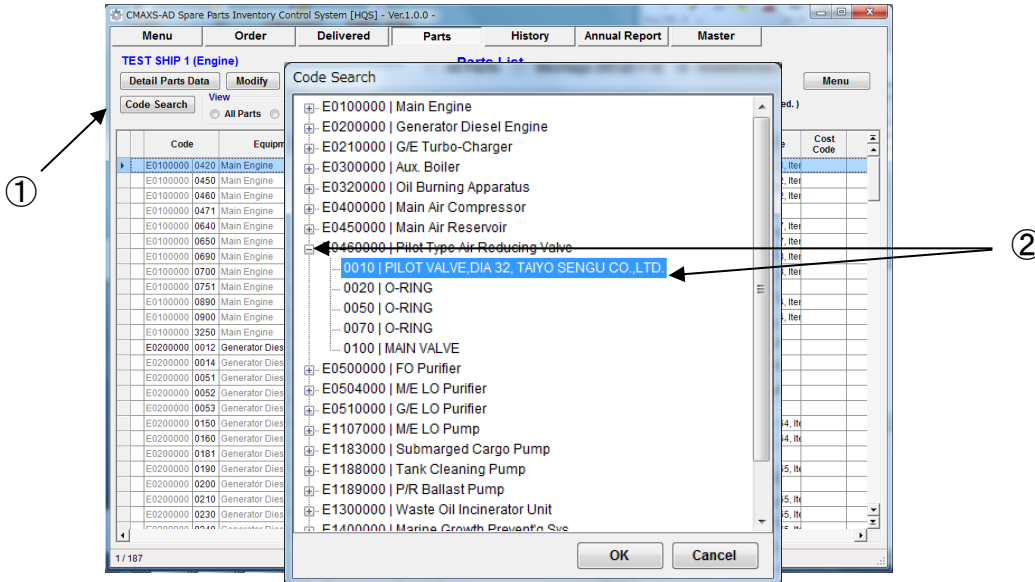


Fig.18-1 Code Search Screen

### 18.2 Filter Function

On the "Parts List Screen", "History Screen" and "Annual Report Screen", [Filter] function can be used for extracting by setting of extraction conditions.

- (1) Select [Filter] on the "Parts List Screen" (Fig.18-2).
- (2) Select or input extracting conditions. Then, select [OK].

Multiple extracting conditions can be set at the same time.

- (3) Extracted data are displayed.

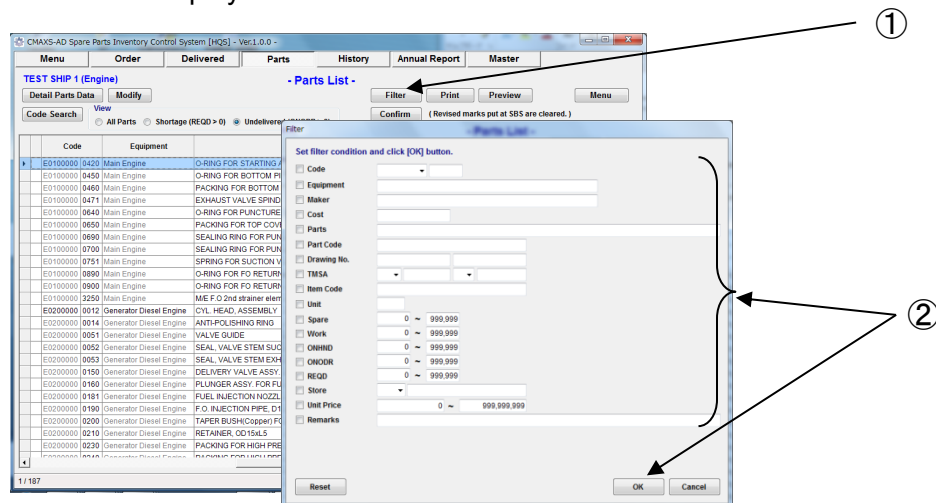


Fig.18-2 Filter Screen



## &lt;Extracting conditions&gt;

- (1) Code : Equipment code and/or spare parts code
- (2) Equipment : Equipment name
- (3) Maker : Equipment's maker name
- (4) Cost : Cost code for budget control
- (5) Parts : Spare parts name
- (6) Part Code : Maker's spare parts' code
- (7) Drawing No. : Drawing Number
- (8) SMS : Spare parts type (This title can be changed. Refer to Section 15)
- (9) Item Code : Spare parts drawing + page + item number
- (10) Unit : Unit for spare parts
- (11) Spare : Standard spare parts stock quantity
- (12) Work : Spare parts working quantity
- (13) Spare R.O.B : Current spare parts stock quantity
- (14) ONODR : Un received spare parts quantity
- (15) Required : Required = Standard – (Spare R.O.B + ONODR)
- (16) Store : Store location code and/or store name
- (17) Unit Price : Spare parts unit price
- (18) Remarks : Remarks

### 18.3 Spare Parts Type Review

On the "Order List Screen", "Delivered Parts List Screen", "Spare Parts List Screen", "History Screen" and "Annual Report Screen", spare parts type (SMS) can be reviewed.

- (1) Select [SMS] on the "Parts List Screen"(Fig.18-3).
- (2) "Type Dialog "(Fig.18-4) is displayed.

Code	Equipment	Parts	ONODR	REQD	Item Code	Cost Code
E0100000	0420 Main Engine	O-RING FOR STARTING AIR VALVE, ID79.4x93.1	5	0	MACH-1, P21, Itex	
E0100000	0450 Main Engine	O-RING FOR BOTTOM PIECE, ID333x107.0 /EXH VALVE LOWER PARTS	4	0	MACH-1, P22, Itex	
E0100000	0460 Main Engine	PACKING FOR BOTTOM PIECE, ID317.7x107.0 /EXH VALVE LOWER PA	4	0	MACH-1, P22, Itex	
E0100000	0471 Main Engine	EXHAUST VALVE SPINDLE	1	0		
E0100000	0640 Main Engine	O-RING FOR PUNCTURE VALVE, ID64.4x93.1 /FUEL PUMP	5	0	MACH-1, P27, Itex	
E0100000	0650 Main Engine	PACKING FOR TOP COVER, OD200xID121xT0.5 /FUEL PUMP	5	0	MACH-1, P27, Itex	
E0100000	0690 Main Engine	SEALING RING FOR PUNCTURE VALVE, OD34 /FUEL PUMP	2	0	MACH-1, P28, Itex	
E0100000	0700 Main Engine	SEALING RING FOR PUNCTURE VALVE, OD111.1 /FUEL PUMP	9	0	MACH-1, P28, Itex	
E0100000	0751 Main Engine	SPRING FOR SUCTION VALVE	3	0		
E0100000	0890 Main Engine	O-RING FOR FO RETURN PIPE LINE, ID44.4x93.1 /OVERFLOW VALVE	3	0	MACH-1, P34, Itex	
E0100000	0900 Main Engine	O-RING FOR FO RETURN PIPE LINE, ID34.4x93.1 /OVERFLOW VALVE	1	0	MACH-1, P34, Itex	
E0100000	3250 Main Engine	ME F O 2nd strainer element	2	0		
E0200000	0012 Generator Diesel Engine	CYL. HEAD, ASSEMBLY	2	0		
E0200000	0014 Generator Diesel Engine	ANTI-POLISHING RING	1	0		
E0200000	0051 Generator Diesel Engine	VALVE GUIDE	18	0		
E0200000	0052 Generator Diesel Engine	SEAL VALVE STEM SUCTION	14	0		
E0200000	0053 Generator Diesel Engine	SEAL VALVE STEM EXHAUST	14	0		
E0200000	0150 Generator Diesel Engine	DELIVERY VALVE ASSY. FOR F.O. INJECTION PUMP, D13.8xL48	4	0	MACH-1, P164, Itex	
E0200000	0160 Generator Diesel Engine	PLUNGER ASSY. FOR FUEL INJECTION PUMP, D109xL196	1	0	MACH-1, P164, Itex	
E0200000	0181 Generator Diesel Engine	FUEL INJECTION NOZZLE ASSY	3	0		
E0200000	0190 Generator Diesel Engine	F.O. INJECTION PIPE, D12.2xL257	1	0	MACH-1, P165, Itex	
E0200000	0200 Generator Diesel Engine	TAPER BUSH(Copper) FOR F.O. INJECTION VALVE NOZZLE	12	0		
E0200000	0210 Generator Diesel Engine	RETAINER, OD16xL5	12	0	MACH-1, P165, Itex	
E0200000	0220 Generator Diesel Engine	PACKING FOR HIGH PRESSURE TUBE, D31xT7	12	0	MACH-1, P165, Itex	
E0200000	0240 Generator Diesel Engine	PACKING FOR HIGH PRESSURE TUBE, D31xT7	12	0	MACH-1, P165, Itex	

Fig.18-3 Parts List Screen

Code	Category
A	Critical
B	Non-Critical
C	Parts
D	Common Parts
E	Tool
F	Accessory

Fig.18-4 SMS Screen



## Appendix A. Sample Screen

### A.1 Parts Requisition (Assess)

IHI MARU (Engine)

Date: 12/14/2011

#### Parts Requisition (Assess)

Code No.: 724

Requisition No.: test

Remarks:

☐ Urgent ☒ Routine ☐ Dock Use

Delivered Date: 12/14/2011 - 12/14/2011

Delivered Port: test

Made on: 12/14/2011 by: Captain

Assessed on: 12/14/2011 by: Manager

\* : shows there comments of Shipboard and/or Headquarters

Code	Equipment Parts	Part Code Drawing No.	SMS Unit	WORK SPARE	ONHND ONODR	ORDR ASSESS	Item Code	Cost Code	Remarks
E0100	Main Engine	142000	C	12	9	1	MACH-1, PA4, Item1		SAME PART AS E0100 0030
0080	FUEL INJECTION VALVE COMPLETE, 377.6x102	142000	SET	12	2	1			
E0100	Main Engine	143000	C	6	0	1	MACH-1, PA4, Item2		SAME PART AS E0100 0040
0090	EXHAUST VALVE COMPLETE, 505x995	143000	SET	2	1	1			
E0100	Main Engine	144000	C	6	0	1	MACH-1, PA4, Item3		SAME PART AS E0100 0050
0100	STARTING AIR VALVE COMPLETE, 327.3x172	144000	SET	1	0	1			

### A.2 Parts Requisition (Quotation)

IHI MARU (Engine)

Date: 12/14/2011

#### Parts Requisition (Quotation)

Code No.: 724

Requisition No.: test

Remarks:

☐ Urgent ☒ Routine ☐ Dock Use

Delivered Date: 12/14/2011 - 12/14/2011

Delivered Port: test

Made on: 12/14/2011 by: Captain

Assessed on: 12/14/2011 by: Manager

\* : shows there comments of Shipboard and/or Headquarters

Code	Equipment Parts	ASSESS Unit	SNK	0.30	0.00	0.00	0.00	0.00	0.00	0.00	0.00	0.00	0.00	0.00	0.00	0.00	0.00
E0100	Main Engine	1	✓	30.00	0.00	0.00	0.00	0.00	0.00	0.00	0.00	0.00	0.00	0.00	0.00	0.00	0.00
0080	FUEL INJECTION VALVE COMPLETE, 377.6x102	SET		30.00	0.00	0.00	0.00	0.00	0.00	0.00	0.00	0.00	0.00	0.00	0.00	0.00	0.00
E0100	Main Engine	1	✓	30.00	0.00	0.00	0.00	0.00	0.00	0.00	0.00	0.00	0.00	0.00	0.00	0.00	0.00
0090	EXHAUST VALVE COMPLETE, 505x995	SET		30.00	0.00	0.00	0.00	0.00	0.00	0.00	0.00	0.00	0.00	0.00	0.00	0.00	0.00
E0100	Main Engine	1	✓	30.00	0.00	0.00	0.00	0.00	0.00	0.00	0.00	0.00	0.00	0.00	0.00	0.00	0.00
0100	STARTING AIR VALVE COMPLETE, 327.3x172	SET		30.00	0.00	0.00	0.00	0.00	0.00	0.00	0.00	0.00	0.00	0.00	0.00	0.00	0.00

### A.3 Parts Requisition (Order)

IHI MARU (Engine)

Date: 12/14/2011

#### Parts Requisition (Order)

Code No.: 724

Requisition No.: test

Remarks:

☐ Urgent ☒ Routine ☐ Dock Use

Delivered Date: 12/14/2011 - 12/14/2011

Delivered Port: test

Made on: 12/14/2011 by: Captain

Assessed on: 12/14/2011 by: Manager

\* : shows there comments of Shipboard and/or Headquarters

Code	Equipment Parts	ASSESS Unit	SNK	0.30	0.00	0.00	0.00	0.00	0.00	0.00	0.00	0.00	0.00	0.00	0.00	0.00	0.00
E0100	Main Engine	1	✓	30.00	0.00	0.00	0.00	0.00	0.00	0.00	0.00	0.00	0.00	0.00	0.00	0.00	0.00
0080	FUEL INJECTION VALVE COMPLETE, 377.6x102	SET		30.00	0.00	0.00	0.00	0.00	0.00	0.00	0.00	0.00	0.00	0.00	0.00	0.00	0.00
E0100	Main Engine	1	✓	30.00	0.00	0.00	0.00	0.00	0.00	0.00	0.00	0.00	0.00	0.00	0.00	0.00	0.00
0090	EXHAUST VALVE COMPLETE, 505x995	SET		30.00	0.00	0.00	0.00	0.00	0.00	0.00	0.00	0.00	0.00	0.00	0.00	0.00	0.00
E0100	Main Engine	1	✓	30.00	0.00	0.00	0.00	0.00	0.00	0.00	0.00	0.00	0.00	0.00	0.00	0.00	0.00
0100	STARTING AIR VALVE COMPLETE, 327.3x172	SET		30.00	0.00	0.00	0.00	0.00	0.00	0.00	0.00	0.00	0.00	0.00	0.00	0.00	0.00

### A.4 Delivered Part List

IHI MARU (Engine)

Date: 12/15/2011

#### Delivered Parts List

Requisition No.: test

Delivered Date: 12/15/2011

Delivered Port: test

Made on: 12/15/2011 by: Captain

\* : shows there comments of Shipboard and/or Headquarters

Code	Equipment Parts	Part Code Drawing No.	SMS Unit	WORK SPARE	ONHND ONODR	ASSESS DELIV	Item Code	Cost Code	Remarks
E0100	Main Engine	142000	C	12	10	1	MACH-1, PA4, Item1		SAME PART AS E0100 0030
0080	FUEL INJECTION VALVE COMPLETE, 377.6x102	142000	SET	12	0	1			
E0100	Main Engine	143000	C	6	1	1	MACH-1, PA4, Item2		SAME PART AS E0100 0040
0090	EXHAUST VALVE COMPLETE, 505x995	143000	SET	2	0	1			
E0100	Main Engine	144000	C	6	1	1	MACH-1, PA4, Item3		SAME PART AS E0100 0050
0100	STARTING AIR VALVE COMPLETE, 327.3x172	144000	SET	1	0	1			

## A.5 History (Consumed Parts)

IHI MARU (Engine)

Date : 12/15/2011  
ABC Company

### History (Consumed Parts)

Period : 12/15/2010 - 12/15/2011

Code	Equipment	Part Code	SMS	WORK	Date	CSMD	Code	Item Code	Cost Code
	Parts	Drawing No.	Unit	SPARE	Maintenance Item				
E0100	Main Engine	142000	C	12	12/14/2011	1	-----	MACH-1, PA4, Item1	
0080	FUEL INJECTION VALVE COMPLETE, 377.6x102	142000	SET	12					
E0100	Main Engine	143000	C	6	12/14/2011	1	-----	MACH-1, PA4, Item2	
0090	EXHAUST VALVE COMPLETE, 505x995	143000	SET	2					
E0100	Main Engine	144000	C	6	12/14/2011	1	-----	MACH-1, PA4, Item3	
0100	STARTING AIR VALVE COMPLETE, 327.3x172	144000	SET	1					

## A.6 History (Order Parts)

IHI MARU (Engine)

Date : 12/15/2011  
ABC Company

### History (Order Parts)

Period : 12/15/2010 - 12/15/2011

Grand Total (US\$) :

Code	Equipment	Part Code	SMS	WORK	Date	ORDR	Supp.	Unit Price	Item Code	Cost Code
	Parts	Drawing No.	Unit	SPARE	Requisition No.			Grand Total		
E0100	Main Engine	142000	C	12	12/14/2011	0		0.00	MACH-1, PA4, Item1	
0080	FUEL INJECTION VALVE COMPLETE, 377.6x102	142000	SET	12	test			0.00		
E0100	Main Engine	143000	C	6	12/14/2011	0		0.00	MACH-1, PA4, Item2	
0090	EXHAUST VALVE COMPLETE, 505x995	143000	SET	2	test			0.00		
E0100	Main Engine	144000	C	6	12/14/2011	0		0.00	MACH-1, PA4, Item3	
0100	STARTING AIR VALVE COMPLETE, 327.3x172	144000	SET	1	test			0.00		

## A.7 History (Delivered Parts)

IHI MARU (Engine)

Date : 12/15/2011  
ABC Company

### History (Delivered Parts)

Period : 12/15/2010 - 12/15/2011

Grand Total (US\$) :

Code	Equipment	Part Code	SMS	WORK	Date	DELIV	Unit Price	Item Code	Cost Code
	Parts	Drawing No.	Unit	SPARE	Delivered Port				
E0100	Main Engine	142000	C	12	12/15/2011	1	0.00	MACH-1, PA4, Item1	
0080	FUEL INJECTION VALVE COMPLETE, 377.6x102	142000	SET	12	test		0.00		
E0100	Main Engine	143000	C	6	12/15/2011	1	0.00	MACH-1, PA4, Item2	
0090	EXHAUST VALVE COMPLETE, 505x995	143000	SET	2	test		0.00		
E0100	Main Engine	144000	C	6	12/15/2011	1	0.00	MACH-1, PA4, Item3	
0100	STARTING AIR VALVE COMPLETE, 327.3x172	144000	SET	1	test		0.00		

## A.8 Annual Report

IHI MARU (Engine)

Date : 12/14/2011  
ABC Company

### Annual Report

Period : 04/01/2010 - 12/14/2011

Made on : 12/14/2011 by : Captain

Grand Total (US\$)

0.00

Code	Equipment	Part Code	SMS	WORK	ONHND		Total			Item Code	Cost Code	Unit Price
	Parts	Drawing No.	Unit	SPARE	Last	Curr.	CSMD	ORDR	DELIV			Total Price
E0100	Main Engine	141000	C	6	0	0	0	0	0	MACH-1, PA3, Item1		0.00
0010	CYLINDER COVER COMPL D934xH1386	141000	SET	1								0.00
E0100	Main Engine	141100	C	24	0	0	0	0	0	MACH-1, PA3, Item1A		0.00
0020	SPRING BOX COMPL FOR FO INJ VALVE, D94xL93	141100	SET	4								0.00
E0100	Main Engine	142000	C	12	0	0	0	0	0	MACH-1, PA3, Item1B		0.00
0030	FUEL INJECTION VALVE COMPLETE	142000	SET	2								0.00
E0100	Main Engine	143000	C	6	0	0	0	0	0	MACH-1, PA3, Item1C		0.00
0040	EXHAUST VALVE COMPLETE	143100, 143000	SET	1	0	0	0	0	0			0.00
E0100	Main Engine	144000	C	6	0	0	0	0	0	MACH-1, PA3, Item1D		0.00
0050	STARTING AIR VALVE COMPLETE	144000	SET	1								0.00
E0100	Main Engine	145000	C	6	0	0	0	0	0	MACH-1, PA3, Item1E		0.00
0060	CYLINDER SAFETY VALVE COMPLETE	145000	SET	1								0.00
E0100	Main Engine	146000	C	6	0	0	0	0	0	MACH-1, PA3, Item1F		0.00
0070	INDICATOR VALVE COMPLETE	146000	SET	1								0.00
E0100	Main Engine	142000	C	12	0	0	0	0	0	MACH-1, PA4, Item1		0.00
0080	FUEL INJECTION VALVE COMPLETE, 377.6x102	142000	SET	12								0.00
E0100	Main Engine	143000	C	6	0	0	0	0	0	MACH-1, PA4, Item2		0.00
0090	EXHAUST VALVE COMPLETE, 505x995	143000	SET	2								0.00
E0100	Main Engine	144000	C	6	0	0	0	0	0	MACH-1, PA4, Item3		0.00
0100	STARTING AIR VALVE COMPLETE, 327.3x172	144000	SET	1								0.00
E0100	Main Engine	145000	C	6	0	0	0	0	0	MACH-1, PA4, Item4		0.00
0110	CYLINDER SAFETY VALVE COMPLETE, L266	145000	SET	1								0.00
E0100	Main Engine	132007	C	48						MACH-1, PA4, Item5		0.00
0120	STUD BOLT & NUT FOR CYLINDER COVER, MS2x3D94xL1629	132007, 132006	SET	4	0	0	0	0	0			0.00
E0100	Main Engine		C	6	0	0	0	0	0	MACH-1, PA5, Item1		0.00
0130	CYLINDER LINER, D712xL2175	134002 134002	SET	1								0.00
E0100	Main Engine	245000	C	6	0	0	0	0	0	MACH-1, PA5, Item2		0.00
0140	PISTON COMPL, D500xL2761	245000	SET	1								0.00

## A.9 Parts List (All Parts)

IHI MARU (Engine)

Date: 12/15/2011

### Parts List (All Parts)

ABC Company

		* Shortage Parts								
Code	Equipment Parts	Part Code Drawing No.	SMS Unit	WORK SPARE	ONHND ONORD	REGD	Item Code	Cost Code	Price Store	Remarks
E0100	Main Engine	141000	C	6	0	0	MACH-1, PA3, Item1		0.00	
0010	CYLINDER COVER COMPL D934xH1386	141000	SET	1	1				---	
E0100	Main Engine	141100	C	24	0	0	MACH-1, PA3, Item1A		0.00	BEING INCLUDED IN E0100 0010
0020	SPRING BOX COMPL FOR FO INJ VALVE, D34xL93	141100	SET	4	4				---	
E0100	Main Engine	142000	C	12	0	0	MACH-1, PA3, Item1B		0.00	BEING INCLUDED IN E0100 0010 & SAME PART AS E0100 0080
0030	FUEL INJECTION VALVE COMPLETE	142000	SET	2	2				---	
E0100	Main Engine	143000	C	6	0	0	MACH-1, PA3, Item1C		0.00	BEING INCLUDED IN E0100 0010 & SAME PART AS E0100 0090
0040	EXHAUST VALVE COMPLETE	143100, 143000	SET	1	1				---	
E0100	Main Engine	144000	C	6	0	0	MACH-1, PA3, Item1D		0.00	BEING INCLUDED IN E0100 0010 & SAME PART AS E0100 0100
0050	STARTING AIR VALVE COMPLETE	144000	SET	1	1				---	
E0100	Main Engine	145000	C	6	0	0	MACH-1, PA3, Item1E		0.00	BEING INCLUDED IN E0100 0010 & SAME PART AS E0100 0110
0060	CYLINDER SAFETY VALVE COMPLETE	145000	SET	1	1				---	
E0100	Main Engine	146000	C	6	0	0	MACH-1, PA3, Item1F		0.00	BEING INCLUDED IN E0100 0010
0070	INDICATOR VALVE COMPLETE	146000	SET	1	1				---	
E0100	Main Engine	142000	C	12	10	2	MACH-1, PA4, Item1		0.00	SAME PART AS E0100 0030
0080	FUEL INJECTION VALVE COMPLETE, 377.6x102	142000	SET	12	0				---	
E0100	Main Engine	143000	C	6	1	1	MACH-1, PA4, Item2		0.00	SAME PART AS E0100 0040
0090	EXHAUST VALVE COMPLETE, 505x995	143000	SET	2	0				---	
E0100	Main Engine	144000	C	6	1	0	MACH-1, PA4, Item3		0.00	SAME PART AS E0100 0050
0100	STARTING AIR VALVE COMPLETE, 327.3x172	144000	SET	1	0				---	
E0100	Main Engine	145000	C	6	1	0	MACH-1, PA4, Item4		0.00	SAME PART AS E0100 0060
0110	CYLINDER SAFETY VALVE COMPLETE, L266	145000	SET	1	0				---	

## A.10 Parts Data

IHI MARU (Engine)

Date: 12/15/2011

### Parts Data

ABC Company

Equipment	Main Engine	Item Code	
Maker	Kobe Diesel	Item Code	MACH-1, PA3, Item1
Parts	CYLINDER COVER COMPL D934xH1386		
Part Code	141000		
DWG No	141000		
SMS	C	SPARE	1
Unit	SET		
Store		Unit Price	(US\$) 0.00
Remarks			
E01000010			
Equipment	Main Engine	Item Code	
Maker	Kobe Diesel	Item Code	MACH-1, PA3, Item1A
Parts	SPRING BOX COMPL FOR FO INJ VALVE, D34xL93		
Part Code	141100		
DWG No	141100		
SMS	C	SPARE	4
Unit	SET		
Store		Unit Price	(US\$) 0.00
Remarks			
BEING INCLUDED IN E0100 0010			
E01000020			
Equipment	Main Engine	Item Code	
Maker	Kobe Diesel	Item Code	MACH-1, PA3, Item1B
Parts	FUEL INJECTION VALVE COMPLETE		
Part Code	142000		
DWG No	142000		
SMS	C	SPARE	2
Unit	SET		
Store		Unit Price	(US\$) 0.00
Remarks			
BEING INCLUDED IN E0100 0010 & SAME PART AS E0100 0080			
E01000030			
Equipment	Main Engine	Item Code	
Maker	Kobe Diesel	Item Code	MACH-1, PA3, Item1C
Parts	EXHAUST VALVE COMPLETE		
Part Code	143000		
DWG No	143100, 143000		
SMS	C	SPARE	1
Unit	SET		
Store		Unit Price	(US\$) 0.00
Remarks			
BEING INCLUDED IN E0100 0010 & SAME PART AS E0100 0090			
E01000040			

ADMAX SPICS

- 1 -

## A.11 Equipments List

IHI MARU (Engine)

Date : 12/15/2011

### Equipments List

ABC Company

Code	Name	Type	Model	Maker
E0100	Main Engine		6UEC50LSII	Kobe Diesel
E0110	M/E Turbo Charger		MET66SD	Mitsubishi H.I.
E0120	M/E Air Cooler			Kawasaki H.I.
E0140	M/E Fuel Oil 2nd Filter			Kanagawa Kiki
E0150	M/E Exhaust Valve Grinding Machine			Yamashina Seiki
E0160	M/E Remote Control System			Natlesco
E0162	M/E Electric Thermometer			Meiyo Elect
E0163	M/E Fuel Oil Pressure Control Valve		MD-22	Vann Co
E0170	M/E Electric Governor		M800-III	Natlesco
E0180	M/E Cylinder Lubricator		WMG-3545	Mitsubishi H.I.
E0185	M/E Oil Mist Detector		MD-9M	Daihatsu Diesel
E0200	Generator Diesel Engine		6N21ALSV	Yanmar
E0210	G/E Turbo-Charger		RH13/203	Ishikawajima-Harima H.I.
E0215	G/E LO Priming Pump		GV-25	Mansei Industry
E0220	Main Generator			Taiyo Elect
E0300	Aux. Boiler			Tortoise Engineering
E0310	Exhaust Gas Economizer			Tortoise Engineering
E0320	Oil Burning Apparatus		R-15	Sunflame
E0400	Main Air Compressor		C220/300	Yanmar
E0450	Main Air Reservoir		4M3x2 45MPa	Hemmi Iron
E0470	Ship Service Air Reservoir		2M3x0 93MPa	Hemmi Iron
E0500	FO Purifier		SJ30G	Mitsubishi kakoki
E0504	M/E LO Purifier		SJ20G	Mitsubishi kakoki
E0510	G/E LO Purifier		SJ20G	Mitsubishi kakoki
E0524	M/E Purifier LO Feed Pump		MG404-1	Hashin Pump Work
E0525	G/E Purifier LO Feed Pump		MG404-1	Hashin Pump Work
E0600	Fresh Water Generator		JW(S)P-25-C80	Alfa Laval
E0700	Accommodation Air Cond.		UAD-30	Ushio Reinetsu
E0720	Air Conditioning Plant for Galley		UAPG-W2HS4DL4	Ushio Reinetsu
E0800	Provision Refrigerator		URS-3.0	Ushio Reinetsu
E1005	Drain Cooler		DCH4F-15B16T	Yamashina Seiki
E1006	FO Heater for M/E			Kajiwara Iron Works Co. Ltd.
E1007	FO Heater for Purifier			Kajiwara Iron Works Co. Ltd.
E1008	LO Heater for Purifier			Kajiwara Iron Works Co. Ltd.
E1012	Plate Type Heat Exchanger	AL8 Type	T30-MFMx2M15-MFMx1	Alfa Laval Japan
E1014	Hamilton Type Heater		HEO-16-S	Tokyo Roki
E1017	Calorifier		EX-PK-40	
E1030	Electric Heater			Uzushio Electric
E1100	Induction Motor			Taiyo Elect
E1101	Jacket Cool FW Pump		HLV-55MN	Hashin Pump Work
E1102	Central Cool FW Pump		RVD-450EN	Hashin Pump Work
E1103	Cooling SW Pump		RVD-450EN	Hashin Pump Work
E1104	Air Cond Cool FW Pump		HLV-55MN	Hashin Pump Work
E1107	M/E LO Pump		SMK-200H	Hashin Pump Work
E1109	M/E FO Supply Pump		TG60-602T	Hashin Pump Work
E1111	M/E FO Circ Pump		TG60-702T	Hashin Pump Work
E1113	Boiler Feed Water Pump		WYU-12XF	Hashin Pump Work
E1115	Boiler Water Circ Pump		CY-12GN	Hashin Pump Work
E1123	Fresh Water Pump		HLV-SLN	Hashin Pump Work
E1125	Drinking Water Pump		HLV-SLN	Hashin Pump Work
E1127	Fire & G S Pump		RDY-150R	Hashin Pump Work
E1128	Fire, Bilge & Ballast Pump		RDY-150R	Hashin Pump Work

ADMAX SPICS

- 1 -

## A.12 Stores List

IHI MARU (Engine)

Date : 12/15/2011

### Stores List

ABC Company

Code	Name
---	---
AFS	"A" DECK FIRE STATION
ER1	ENGINE ROOM
LVR	LIVING ROOM

## A.13 Suppliers List

IHI MARU (Engine)

Date : 12/15/2011

### Suppliers List

ABC Company

Code	Name	PIC	E-Mail	TEL	FAX	Address
IMC	IHI Marine Co., Ltd.	Mr. ee	XXX@IMC.co.jp	+81-3-xxxxx-xxxx	+81-3-xxxxx-xxxx	
ABC	ABC Company	Ms. △△		02-xxxxxxx	02-xxxxxxx	